



HOFFMAN ESTATES HIGH SCHOOL

2022-2023 Guidebook



A MESSAGE FROM MICHAEL ALTHER PRINCIPAL OF HOFFMAN ESTATES HIGH SCHOOL

The amazing faculty and staff at Hoffman Estates High School are dedicated to ensuring your child will achieve their academic potential and be supported in their social/emotional development. We will encourage connectedness through participation with the variety of athletic and extracurricular opportunities that exist at Hoffman Estates High School.

Together, our students, parents, faculty and staff work to create a learning community in which everyone feels safe, welcomed, represented and valued. The Hoffman Estates learning community values all facets of our diversity and recognizes the strength that lies within it.

We are excited to share this Guidebook with you as it is a resource which will help inform and support decision making as your student navigates their high school experience. Know that the faculty and staff are here to work collaboratively with you and your child to ensure the best educational experience.

We would like to thank you in advance for your support and collaboration as we work together to ensure all of our students have the high school experience they deserve!

Thank you,

Michael Alther
Principal

“

*The Hoffman Estates High School faculty and staff **WELCOME** you to the 2022-2023 school year! Each new school year brings extraordinary opportunities for our students to experience innovative teaching and exceptional learning experiences.*

”

TABLE OF CONTENTS

Calendar of Events.....	3	Food Services	13
District 211 Graduation Requirements.....	4	Meal/Fee Waiver Application	13
4-Year Planning	5	Transportation	13
Attendance.....	6	School Safety and Security.....	14
Absence.....	6	Software Systems and User Accounts	15
Academic Supports	7	Summer School.....	15
Student Readiness Plan.....	8	Communications/Notifications.....	16
Activities/Athletics.....	9	Booster Club.....	17
Student Services	9	Information for Seniors	18
Testing Information	10	FAQ	19
Health Services Information	12	Contact Information	Back cover

CALENDAR OF EVENTS

August 11	FIRST DAY OF CLASSES
September 1	PARENT OPEN HOUSE
September 7	FINANCIAL AID NIGHT
September 20	VIRTUAL FIRST GENERATION COLLEGE SYMPOSIUM
October 6	COLLEGE NIGHT
October 12	PSAT/NMSQT EXAM (JUNIORS-OPTIONAL)
November 15 - November 16	D211 VIRTUAL CAREER EXPO
November 2022 - January 2023	COURSE SELECTION FOR 23-24 SCHOOL YEAR
December 20 - December 22	FIRST SEMESTER FINAL EXAMS
December 23, 2022 - January 9, 2023	WINTER BREAK
January 10	FIRST DAY OF SECOND SEMESTER
January - February	ACCESS FOR ENGLISH LEARNERS
March 6 - March 31	SEAL OF BILITERACY
March 27 - March 31	SPRING BREAK
April 12	SAT EXAM (JUNIORS) PSAT 10 EXAM (SOPHOMORES)
April 13	ILLINOIS SCIENCE ASSESSMENT (JUNIORS) PSAT 9 EXAM (FRESHMEN)
May 1 - May 12	ADVANCED PLACEMENT EXAMS
May 19	GRADUATION – CLASS OF 2023
May 24 - May 26	SECOND SEMESTER FINAL EXAMS
May 26	LAST DAY OF SCHOOL

DISTRICT 211 GRADUATION REQUIREMENTS

Recommended Guide for Academic Preparation

ACADEMIC AREA	DISTRICT 211 GRADUATION REQUIREMENTS*	COMMUNITY COLLEGE CAREER PROGRAMS, VOCATIONAL SCHOOLS	4-YEAR COLLEGES AND UNIVERSITIES, COMMUNITY COLLEGE TRANSFER PROGRAMS*	HIGHLY SELECTIVE COLLEGES AND UNIVERSITIES
ENGLISH	4 Years	4 Years	4 Years: Emphasis on written and oral communication and literature	4 Years
MATHEMATICS	3 Years including a 300-level course	2 Years	3 Years: Algebra, Geometry, Algebra 2, Trigonometry	4 Years: Recommended through Calculus
SCIENCE (laboratory sciences)	2 Years	2 Years	3 Years: Recommended core areas: Biology, Chemistry, Physics	4 Years: Recommended core areas: Biology, Chemistry, Physics
SOCIAL STUDIES	2 Years: U.S. History and Social Science Survey or equivalent	2 Years	3 Years: Emphasis on History and Government (<i>requirement varies</i>)	3 to 4 Years
WORLD LANGUAGE	1 Year or Career/Technical Education/Fine Arts	None Required	2 Years**	2 to 4 Years
CAREER & TECHNICAL EDUCATION or FINE ARTS	1 Year or World Language	None Required	2 Years:** May include course in: Applied Technology, Art, Business Education, Family and Consumer Sciences, or Music	1 Year recommended

* Additional District 211 requirements include: consumer education, driver education, 2 years of physical education, and 2 years of Wellness.

** World language preparation may be recommended or required by colleges or universities. State-supported universities in Illinois may accept vocational education or fine arts courses in lieu of foreign language. Check with a counselor for details.

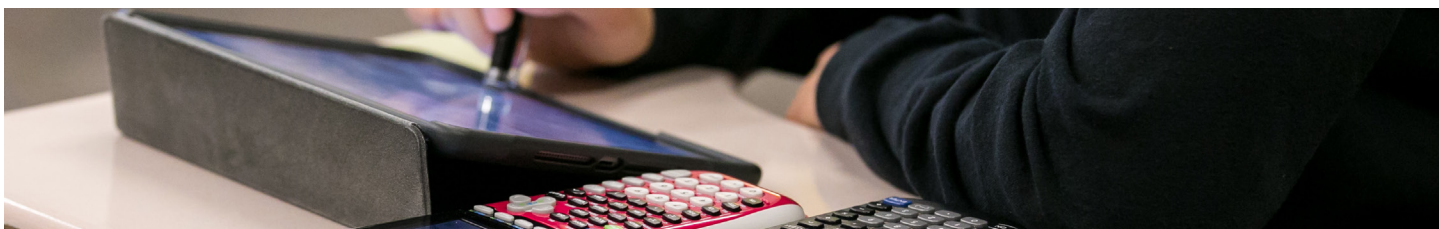
SPECIAL POLICIES REGARDING CREDITS

- Students may drop an elective course after the first semester and receive one-half credit. However, one semester of a one-year course may not meet college entrance requirements.
- Students may drop a fifth or sixth class without penalty until the 25th day of the semester. Thereafter, the student will be given “W/F” or “W/P” based on academic standing at the time of the drop. **The “W/F” grade will be included in the calculation of grade point average.** Students who drop after the 25th day will be assigned compulsory study hall instead of attending class for the remainder of the semester.

DUAL CREDIT PROGRAM

Selected courses in the curriculum have been designated as “dual” or “articulated credit.” These courses, designated as 600-level courses, are offered as part of a curriculum collaboration with Harper College or other colleges as indicated. Dual credit allows a student to earn both college and high school credit simultaneously. Certain restrictions apply to these courses and interested students should see their high school counselor for details.

Additional information regarding how dual credit coursework may transfer to a variety of colleges can be found at <https://transferology.com>.



4-YEAR PLANNING

During freshman year, students develop a 4-year plan forecasting their high school experience based on individualized goals and aspirations for life after high school. The 4-year plan includes academic coursework to meet graduation requirements, elective course choices to support areas of personal interest, career options, and school and community involvement.

Each year, students revisit their 4-year plan making adjustments reflecting goal updates, changes in personal interests, and self-reflection. The 4-year plan is dynamic and will likely see multiple revisions from the start of 9th grade through graduation day. The student's school counselor facilitates the plan, develops the process, and assists students to understand various factors they should consider when crafting their plans.



College Majors and Career Clusters

Students are encouraged to choose elective courses that align with identified areas of interest based on students' work in Xello.

District 211's curriculum is built around the nationally recognized Career Cluster model which can help students explore broad career fields as they refine their interests. More details about curricular alignment with the Career Cluster model is available at <http://www.d211careercluster.org/>.



Power of 15

Hoffman Estates High School's goal is for all students to graduate high school with the equivalent of at least 15 college credits. This goal is called "The Power of 15" because students who earn 15 or more early college credits are more likely to experience success after high school. Students can earn early college credits by:

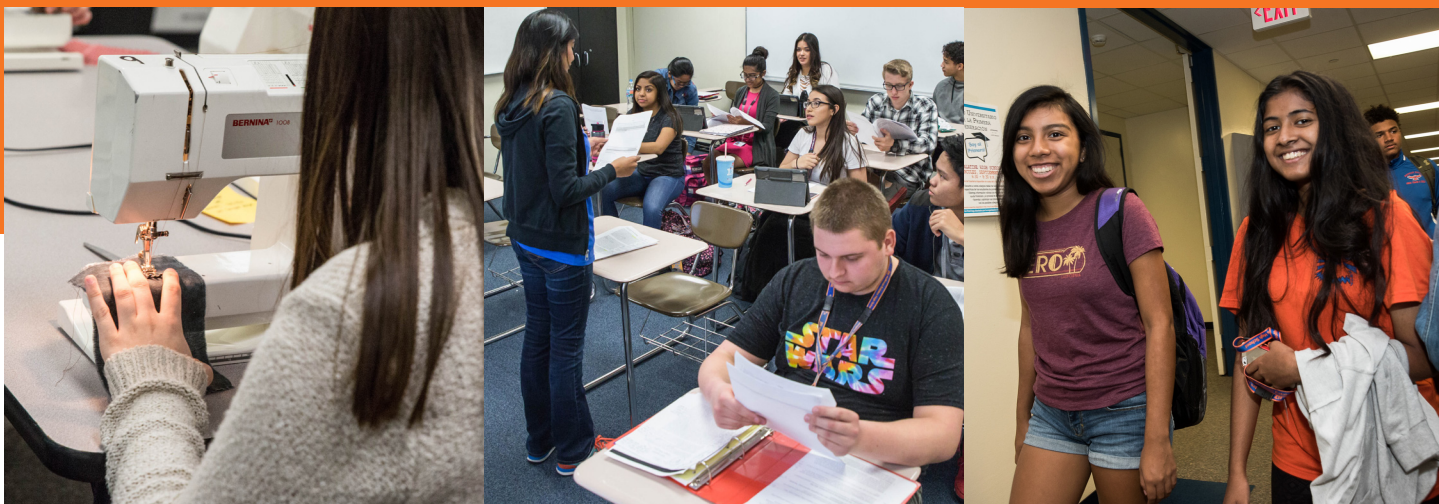
- participating in Advanced Placement (AP) coursework and earning a passing score on the associated AP exam;
- taking a Dual Credit course (a course that awards high school credit and college credit simultaneously).



Requesting Courses

From late November to early January, current freshmen, sophomores, and juniors meet individually with their school counselor to request courses for the next school year.

Students are encouraged to choose courses that support their 4-year plans, are aligned with career clusters identified by work in Xello, and support post-high school goals. Parents play an important role in the course selection process by offering direction and guidance to their child.



ATTENDANCE

Daily attendance at school is required by State Law.

Success in school is linked closely with being in the classroom, joining in class discussions, and completing assigned work on a regular basis. In the classroom, students can take full advantage of classmates' ideas, teacher explanations of assignments, and other material that enriches learning.

There is no way to duplicate the same classroom experience after a student has been absent.

**PLEASE CALL THE ATTENDANCE
OFFICE TO REPORT ANY ABSENCES
FROM SCHOOL, INCLUDING LATE
ARRIVALS OR LEAVING EARLY
847-755-5670**

ABSENCE

Parents should call the Attendance Office by 10:00 a.m. when a student is too ill to attend school. This telephone call allows the student to come to class the next day with little or no delay. Parents are requested to notify school personnel no later than 24 hours after the absence. If parents do not call, the student's absence will be considered truant until a parent authorizes the absence. School staff will attempt to contact parents when students are absent and a parent call has not been received.

An authorized absence means the student is not present in the school, assigned classroom, or on the campus.

Students are not to leave school before their regular dismissal time without the permission of an administrator or the nurse. Once students have permission to leave, they must sign-out in the Attendance Office and leave the building.

While daily attendance is required, students may occasionally miss school for the following reasons: serious illness or death in the family (inform the school as soon as reasonably possible), court appearance, doctor or dental appointments, pre-arranged college visits (must be made two days in advance).

If one of these situations occurs, parents should call the Attendance Office ***at least*** 24 hours in advance of the absence. For court, doctor, or dental appointments during the day, the student must sign out in the attendance office. ***Students may not be excused from any class in order to complete work, make-up work, or take a test or quiz.***

All work assigned when the student was absent is to be made up after the student's return to school.

ACADEMIC SUPPORTS AT HOFFMAN ESTATES

At Hoffman Estates High School, we strive to provide academic support for all students, in order to enhance student success. While students are always encouraged to seek assistance from their academic teachers, a variety of resources are available for students seeking additional support.

Grade Reporting

Student grades are reported by semesters. Each semester is made up of 18 weeks. Parents are informed of their student's progress at 6- and 12-week intervals. The 6- and 12-week in-progress grades may include special comments from the teacher. Parents of students having difficulty or doing unsatisfactory work are urged to meet with teachers and/or the student's counselor to discuss improvement options. Specific dates of all student reports are in each school's Calendar Handbook. Parents/guardians can view their students academic progress in Infinite Campus.

Academic Advising

Students work with their counselor to develop a personal academic plan based on their interests and goals. The counselor can also recommend other academic supports as needed. Administrators, counselors, psychologists, social workers, and support staff work hand-in-hand to personalize a student's academic supports.

Academic Intervention System

Hoffman Estates High School's academic intervention system was created to ensure that every student can meet or exceed academic standards. The goal of this system is to increase academic performance for HEHS students through personalized help from faculty, staff, peers and parents. This is accomplished by focusing on homework completion and test-taking strategies, building strong organizational habits and developing the study skills necessary to be successful in high school and beyond. The multi-tiered academic interventions provide a structure to assist all students in improving academically and being more responsible, self-directed learners.

We offer a variety of academic interventions which are assigned to students based on their academic needs. Seminar provides students an opportunity to independently develop their academic accountability and time management skills. Students have access to the HEHS media center, tutoring centers, student services staff and test make-up. Students may also be assigned to the Hawk Study and Resource Lab, a quiet, structured environment during the school day to complete homework and study for tests and quizzes. Students are supervised by a HEHS staff member who can collaborate with teachers and provide access to tutoring centers.

Lastly, HEHS offers a more intensive academic support, the Hawk Guided Study, in which students work individually with HEHS staff members and have access to tutoring centers.

AP Study Lab

Students participating in an AP course for the first time may be assigned to or request placement within the AP Study Lab. AP teachers work to guide these AP students on improving their learning, organization, time management, and access to additional support.

Tutoring

Students are always encouraged to talk to their teachers about specific issues in their class. However, tutoring for various subjects is available throughout the school day. Additionally, there is tutoring available after school Mondays through Thursdays from 3-5 pm in the HEHS Media Center in the areas of reading, math, world language and science.

SAT Prep

Hoffman Estates High School provides a free after school SAT prep program for HEHS students. Students will be exposed to information and test taking strategies to prepare them for participation in the annual school-day SAT test administered in April.

Student Support Team (SST)

Each SST consists of an administrator, counselors, and psychologist/social worker and provides one point person for parents and students to access support services. This team format provides an opportunity for staff to collaborate and to address attendance, behavior, and academic issues quickly and efficiently.

Freshman Foundations

Hoffman Estates High School's Freshman Foundations program is designed to ease the transition to high school. Each Freshman Foundations class is facilitated by a certified teacher and several FreshMENTORS. FreshMENTORS are junior and senior students who have been selected based on their leadership qualities. Freshmen students are assigned a guidance counselor based on their Freshman Foundations class. Lessons are conducted within the class by the classroom teacher, FreshMENTORS and guidance counselors. These lessons are focused on providing students with resources for a successful student career and helping students establish a sense of belonging at Hoffman Estates High School. Students will also have the opportunity to check their academic progress or spend time receiving tutorial supports.

Need Help, But Not Sure Where to Begin?

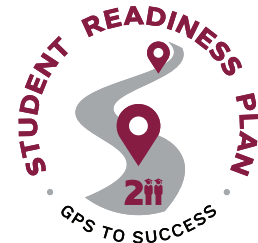
If a student has academic questions or difficulties they should contact their classroom teacher for help. Parents may contact teachers through email or by phone. Questions regarding scheduling, emotional health/wellness support, or post-secondary planning can be addressed by a student's counselor. Students who may not know where to begin for support may visit their team room where a staff member or administrator can engage them and help to ascertain their unique needs.



STUDENT READINESS PLAN

The District 211 Student Readiness Plan helps students prepare for high school graduation and their lives as independent young adults. All Hoffman Estates High School students are assigned an account within the online Student Readiness Plan portal providing them with a centralized hub to create individualized goals, measure progress, and track activity throughout their high school experience.

The Student Readiness Plan consists of five essential readiness components and each component contains grade-specific objectives for students to accomplish. Progress toward completion is indicated on visual infographics allowing students to see their status at-a-glance.



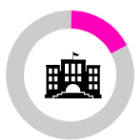
Created by
Township High School District 211

Academic Readiness



60% COMPLETE

College & Career Exploration



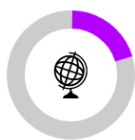
17% COMPLETE

Student Involvement



100% COMPLETE

Global Competitive Skills



20% COMPLETE

Wellness



14% COMPLETE

DID YOU KNOW...

The Student Readiness Plan includes a calendar that students can customize to display personally meaningful dates and events.

During each year of high school, your child's school counselor will lead your student through targeted activities that directly connect to various elements of the Student Readiness Plan. Parents can view their children's Student Readiness Plans and are encouraged to have discussions with their children about goals and progress.

More information about the Student Readiness, including login instructions and the full set of Plan features, is available at <https://adc.d211.org/domain/73>.

ACTIVITIES/ATHLETICS

Hoffman Estates High School values student involvement and participation in extracurricular activities, including athletics, clubs, and the fine arts. These activities provide students opportunities for enrichment while also helping them to connect to their school community. All students are encouraged to join at least one of these groups during freshman year.

Hoffman Estates High School offers over 75 unique student clubs and activities. A full list of these organizations is available on the school website at <http://www.hoffmanestates.portal.rschoolday.com>.

Athletic teams are organized according to the fall, winter, and spring sports seasons.

Athletic and activity camps are part of the Hoffman Estates High School summer school program. Specific summer camp details will be sent to you in the spring as part of the summer school information packet. Students must have a valid physical on file with the nurse's office to participate in these camps.

DID YOU KNOW...

Students can schedule an appointment with their counselor by clicking the icon below on their iPad.



principal, 2-3 school counselors, a psychologist, and/or a social worker, each team monitors student progress according to academic, behavior, and attendance factors. Any student displaying indicators of concern receives concentrated attention and support. The school counselor remains the best point of contact for any parent interested in knowing more about the student support team model.

Contact the Student Services Office at 847-755-5630.



STUDENT SERVICES

The Student Services Department supports every Hoffman Estates High School student. Students are assigned a school counselor who serves as their main point of contact for all school-related matters throughout high school. Students can request an appointment with their school counselor during any non-academic period of the student's school day.

Counselors lead students through grade-specific activities and lessons during the school year. The activities, often provided in classroom settings, are designed to support student development in the areas of academic proficiency, post-high school planning, and social-emotional wellbeing.

Parents are encouraged to contact their child's school counselor anytime the parent seeks greater insight about their child's status in school. The counselor has access to a variety of resources to assist parents and can facilitate connections with others in the school as needed.

Registrar

The Registrar's office maintains all permanent school records and manages the collection of students' grades at the conclusion of each semester. Permanent records are maintained for sixty years after a student graduates, transfers, or permanently withdraws from school.

Hoffman Estates High School uses Parchment, an online system to process requests from current high school students for school transcripts. Details about Parchment can be found on the school website at <https://adc.d211.org/Page/3693>.

Graduates can request transcripts by logging onto their Parchment account. If needed, contact the Registrar's office at 847-755-5628.

Student Support Teams

Hoffman Estates High School has assembled student support teams to best meet the needs of all students. Composed of an assistant

TOWNSHIP HIGH SCHOOL DISTRICT 211

ASSESSMENTS 2022-2023

Township High School District 211 coordinates district wide assessment programs for high school students.

- State of Illinois Assessment Program that complies with the requirements of the State Board of Education.
- College-Bound Assessments aid students in making decisions with regards to their college plans. These are assessments such as the National ACT and SAT where students register for the test online.

STATE OF ILLINOIS ASSESSMENT PROGRAM

PSAT 8/9

Student Population: 9th grade students

Date: Thursday, April 13, 2023

Visit <https://satsuite.collegeboard.org/psat-8-9> for more information.

PSAT 10

Student Population: 10th grade students

Date: Wednesday, April 12, 2023

Visit <https://satsuite.collegeboard.org/psat-8-9> for more information.

SAT State Testing is a state-funded SAT assessment administered to all high school juniors and is a graduation requirement. This in-school administration will include the essay.

Student Population: 11th grade students

Date: Wednesday, April 12, 2023

Visit <https://satsuite.collegeboard.org/sat> for more information.

Illinois Science Assessment is a state required science assessment that will be administered to students in 11th grade. The assessment is aligned to the Illinois Learning Standards for Science incorporating the Next Generation Science Standards (NGSS). Visit <https://www.isbe.net/isa> for more information.

Student Population: 11th grade students

Date: Thursday, April 13, 2023

ACCESS for ELLs – Assessing Comprehension and Communication in English State-to State for English Language Learners is a standard-based English Language Proficiency Test that tests students in the four language domains: Listening, Speaking, Reading, and Writing. Visit <https://www.isbe.net/Pages/EnglishLearnerIdentificationAssessment.aspx> for more information.

Student Population: All English Learners

Dates: January 11-February 28, 2023

DLM are assessments for students with significant cognitive disabilities for whom general state assessments are not appropriate, even with accommodations. DLM assessments offer students a way to show what they know and can do in English language arts, mathematics, and science. Visit <https://www.isbe.net/dlm> for more information.

Student Population: Students identified through an IEP

Dates: March 15, 2023-May 10, 2023

Illinois Fitness Assessment – All Illinois public schools are required to administer a physical fitness assessment to students in grades 3-12. The four required areas of the fitness assessment are aerobic capacity, muscular capacity, muscular strength, and flexibility.

Student Population: All grades

Dates: April-May

Seal of Biliteracy – The Illinois State Board of Education's Seal of Biliteracy Program will place an official seal on diplomas and official recognition will be placed on transcripts of students who qualify in both English and another language. District 211 offers the AAPPL and Avant Stamp Language Assessments to help students qualify for the Seal of Biliteracy. The AAPPL is available in Arabic, Chinese (Mandarin), French, German, Hindi, Italian, Japanese, Korean, Portuguese, Russian, Spanish and Thai. The Avant Stamp 4S is available in Hebrew and Polish. Students also need to meet English proficiency. Visit <https://www.isbe.net/sealofbiliteracy> for more information.

Student Population: Seniors

Fee: \$25

Dates: March 6-31, 2023

Administration: Online or in-person

COLLEGE BOUND ASSESSMENTS

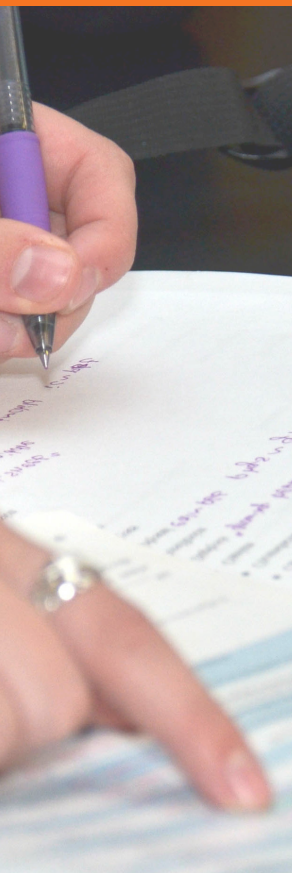
AP – Advanced Placement Tests are offered for students who have pursued college-level AP courses while in high school. Students who earn a 3, 4, or 5 on an exam may receive early college credits from a college or university. Registration/payment for AP Exams are required in the fall. Visit <https://apstudents.collegeboard.org/what-is-ap> for more information.

Student Population: Students enrolled in AP courses (optional).

Fee: approximately \$97 for each test

Dates: Monday, May 1, through Friday, May 12, 2023





PSAT/NMSQT – Preliminary Scholastic Aptitude Test/National Merit Scholarship Qualifying Test measures the reading, writing and language, and math skills needed for college and career. Scores from the PSAT/NMSQT may qualify 11th grade students to be National Merit Scholars and enables students who score at the highest levels to qualify for college scholarships. It allows students to compare their academic skills with those of other college-bound students.

The PSAT/NMSQT is administered during the school day and is an optional exam. Registration/payment will be available in the fall. Visit <https://satsuite.collegeboard.org> for more information.

Student Population: Predominantly college-bound 11th grade students to qualify for National Merit Scholars or other college scholarships.

Fee: Approximately \$30

Date: October 12, 2022

SAT is an assessment designed to assess a student's academic readiness for college. The SAT assesses student knowledge in reading, writing and mathematics. Most students take the SAT during their junior or senior year of high school, and colleges and universities may use the SAT to make admission or scholarship decisions. The assessment is composed of Evidence Based Reading and Writing and Math. College Board determines the locations of the tests. All test dates are Saturdays. Visit <https://satsuite.collegeboard.org/sat> for registration and testing locations. **Student Population:** Predominantly college-bound 11th and 12th grade students.

SAT TEST DATE	REGISTRATION DEADLINE
Aug 27, 2022	Jul 29, 2022
Oct 1, 2022	Sept 2, 2022
Nov 5, 2022	Oct 7, 2022
Dec 3, 2022	Nov 3, 2022
Mar 11, 2023	Feb 10, 2023
May 6, 2023	Apr 7, 2023
Jun 3, 2023	May 4, 2023

ACT is a national college admissions examination that consists of subject area tests in English, Mathematics, Reading and Science. An optional writing test measures skills in planning and writing a short essay. ACT determines the locations of the tests. Visit <https://act.org/student> for registration and testing locations.

Testing Accommodations – If your student requires accommodations for testing under an IEP or 504 plan and will register for one of the optional assessments, please contact the counselor or case manager in your school at the beginning of the school year to learn how to apply for accommodations for the specific tests.

ACT TEST DATE	REGISTRATION DEADLINE
Sept 10, 2022	Aug 5, 2022
Oct 22, 2022	Sept 16, 2022
Dec 10, 2022	Nov 4, 2022
Feb 11, 2023	Jan 6, 2023
Apr 15, 2023	Mar 10, 2023
Jun 10, 2023	May 5, 2023
Jul 15, 2023	Jun 16, 2023

Test Preparation Programs – District 211 implements a multi-tiered approach to preparing students for the SAT Suite of assessments. Each school offers a free test-prep program. For specific information contact your child's guidance counselor. The Khan Academy is a free resource available to all students preparing to take the SAT. Students must establish an individual Khan Academy account and can link that account with their College Board account to establish a personalized SAT practice plan.

ASSESSMENT CALENDAR BY MONTH 2022-2023			
October		April	
Wed, Oct 12	PSAT/NMSQT	Wed, Apr 12	SAT & PSAT 10
Sat, Oct 15	PSAT 8/9 (incoming freshmen)	Thu, Apr 13	PSAT 8/9
Oct	Practice SAT	Thu, Apr 13	Illinois Science Assessment
January		May	
Jan/Feb	ACCESS for ELL	May 1 - 12	AP Exams
March			
Mar 6-31	Seal of Biliteracy		

HEALTH SERVICES INFORMATION

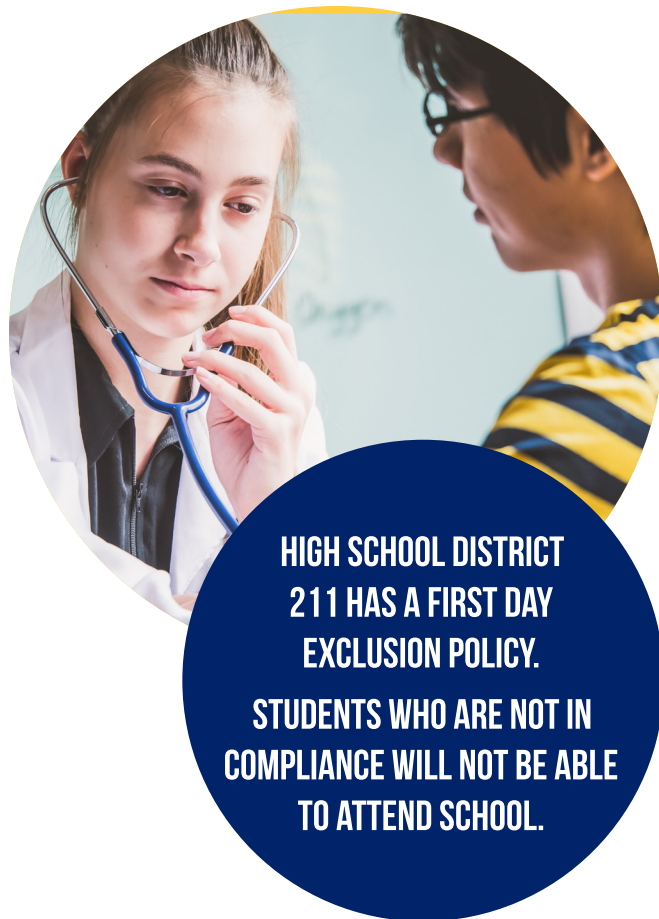
The Health Services Office is staffed by a school nurse and a health clerk who provide support for illnesses, known medical conditions, and injuries. In the event a student must be sent home from school for a medical reason, the Health Services Office will notify the parent/guardian. In cases where the parent/guardian is unavailable, the office will contact an adult listed as an emergency contact on the student's school registration information. Please make sure emergency contact information is up-to-date. The Health Services Office will only administer prescription and non-prescription medications in school after the parent/guardian has provided a signed copy of the Authorization for Administration of Medication Form. Families of students with chronic health conditions should contact the Health Services Office to discuss appropriate accommodations for your child. If your child has asthma, food allergies, epilepsy, diabetes or any other health condition that requires medication or a health care plan, have your child's health provider complete a new action plan or medication form for each new school year.

Health care plans and medication forms can be found on the [District 211 Health Information Website](#).

Health Requirements

Students entering 12th grade in the State of Illinois must show proof of 2 doses of the Meningococcal conjugate vaccine. Children receive their first dose at 11 years old with a booster dose on/after 16 years old. Only one dose is required for students entering 12th grade if the first dose was received on/after your child's 16th birthday.

Students entering freshman year must complete immunization history and Child Health Examination Form signed by a medical provider, dated on or after 8/11/2021. A sports physical does not meet this requirement.



**HIGH SCHOOL DISTRICT
211 HAS A FIRST DAY
EXCLUSION POLICY.
STUDENTS WHO ARE NOT IN
COMPLIANCE WILL NOT BE ABLE
TO ATTEND SCHOOL.**

Required Dental Examination

All students in the Class of 2026 are required to provide proof that an oral health examination was completed by a licensed dentist between November 15, 2021 – May 15, 2023.

Transfer students from another Illinois High School:

- Students must present a copy of their 9th grade physical, or more current complete physical, with updated immunizations.

Transfer students from out of state OR out of country

- Students have 30 days to complete the Illinois state requirements of a physical and updated immunizations. The physical must be completed on the [Illinois State Form](#).

- Families must provide an [Eye Examination Form](#) dated within 12 months of the first day of school.
- A [Dental Exam](#) is required if transferring as a freshman.

Religious Exemptions to Required Immunizations

Families seeking a religious exemption from the immunization requirements must use the official Illinois Certificate of Religious Exemption to Required Immunizations and/or Examinations form. This form must be signed by a licensed medical physician.

Please turn in all medical paperwork to either the Health Services Office or using the preferred submission method emailing HEHSnurse@d211.org.



FOOD SERVICES

High School District 211 lunch and breakfast programs have been recognized for excellence by the Illinois State Board of Education, Department of Child Nutrition, and the United States Department of Education. Each year, the District serves over one million meals to students.

Lunch and breakfast menus are designed to appeal to young people's tastes and monthly menus are available at <https://il49000007.schoolwires.net/Page/6398>. Parents may prepay for their child's meals using the *MySchoolBucks* app. More information about this convenient option is available at <https://adc.d211.org/Page/6670>.



MEAL/FEE WAIVER APPLICATION

Students may qualify for free or reduced-price meals and waiver of fees, if the household meets federal income guidelines. Households must reapply annually. The application is available on July 1 and can be completed online or a hardcopy application is available by request. If a student qualifies for meal benefits, additional fees waived may include: Driver Education, PE uniforms and locks, AP tests, summer school tuition, and graduation cap and gown fees. The application can be completed online at schollunchapp.com or contact the Food & Nutrition Services Department for additional information: foodservice@d211.org.



TRANSPORTATION

Free bus transportation is provided for all students who reside more than 1.5 miles from Hoffman Estates High School. Bus route details and pick/drop times are provided in the first week of August in your students Infinite Campus portal. Bus transportation is available for a nominal fee for students who reside less than 1.5 miles from school. Contact the District 211 Transportation Department for more details or see the district website under Departments-Transportation. Hoffman Estates High School also provides bus transportation in the late afternoon and evening to accommodate students participating in extracurricular activities and athletics. Late/evening buses are available Monday – Friday and leave at 4:10 and 5:25 p.m. Students must have a valid bus pass to board the late/evening buses.

DID YOU KNOW...

Parents can track their child's school bus using the *MyStop* app. Visit <https://il49000007.schoolwires.net/Page/7551> for more information.

SCHOOL SAFETY AND SECURITY

School safety is a top priority at Hoffman Estates High School. The school employs a video surveillance camera system to enhance security and deter inappropriate activity on school grounds. Regular safety drills that practice our Lockdown and Run, Hide, Survive procedures are conducted at each school. These drills involve students and staff members to help all members of the school community know how to respond in the event of an emergency. Additionally, the following safety protocols have been implemented:

School Resource Officer

In partnership with the Hoffman Estates Police Department, Hoffman Estates High School employs a full-time sworn police officer to be on-site each school day. The School Resource Officer (SRO) assists the school with all facets of school security.

Lockdown Push Stations

We have installed blue lockdown push-button stations in each building. These devices are similar to the standard fire alarm pull station that you would find in any public setting. The Lockdown push buttons allow any staff member to initiate our Lockdown and Run, Hide, Survive procedures quickly and without delay.

School Visitors

All visitors, including parents, to Hoffman Estates High School must provide a valid photo ID upon entering the school. A visitor tag will be provided and must be worn for the duration of the visitor's time at school. Food deliveries are not permitted.

Parking

Those parking at Hoffman Estates High School must display a valid parking permit. Visitor parking spaces are closely monitored and are reserved for short-term use by parents and other visitors.

Student ID Cards

Students must have their school ID card in their possession at all times while at school. The ID card must be provided to school staff members upon request and visible for entry to the school.

Safety Concerns

Students, parents, and community members are encouraged to report safety concerns using the online form available on the Hoffman Estates High School website. Reports may be anonymous, if desired. The form is available at <https://adc.d211.info/forms/hoffman-estates-high-school-safety-concern/>.



SOFTWARE SYSTEMS & USER ACCOUNTS

A variety of software systems are used to maintain student information, manage instructional tasks, and support student development. Parents and students alike have access to these systems, and parents are encouraged to establish user accounts for each system and reference the library of tutorial videos to learn how to maximize the use of these systems. The tutorial videos are available on the District 211 website at adc.d211.org/page/7133.



Infinite Campus

Infinite Campus (IC) is used to manage student data such as contact information, attendance, grades, and assessment scores. The IC portal is located at <https://campus.d211.org/campus/portal/township.jsp> and requires parents to create a unique individualized user account. Account creation requires an activation key and all parents are sent that key during the fall of their child's 8th grade year in anticipation of entrance to high school. Parents of transfer students will receive an activation key upon school enrollment. Parents are discouraged from sharing their IC password with their child since the parent account includes privileges unique to the parent's role. Students have their own IC accounts.



Schoology

The Schoology portal is located at <https://d211.schoology.com/login?&school=13690631>. This platform helps teachers track, report, deliver, and collect instructional materials. Parents will receive an email early in the school year with details about accessing Schoology, including an individualized username and temporary password. Once in Schoology, parents will be able to see every course associated with their child.



MySchoolBucks

MySchoolBucks is the exclusive system for District 211 parents to make school meal prepayments, as well as make online payments for monetary transactions with the school such as iPad protection plans and repair costs, student parking permits, and more. Parents can create a free MySchoolBucks account by www.myschoolbucks.com or downloading the MySchoolBucks app to their mobile device. Please contact the District 211 Food and Nutrition Services department at 847-755-6681 if you have questions about this free service.



SUMMER SCHOOL

The District 211 Summer School program includes academic courses and summer activity/athletic camps. Each experience is designed to help students in their journey toward high school graduation and explore areas of interest.

Academics

Summer School courses provide an opportunity for students to recover course credits, replace low grades with higher grades, move ahead within a curriculum sequence, and explore areas of career interest.

Activities/Athletics

School activity and athletic teams sponsor summer camps to help students explore areas of interest and to enhance skills in preparation for upcoming athletic seasons and events.

The first session of Summer School 2023 runs from June 5 - June 26. The second session runs from June 27 - July 20. Each 3-week session holds classes Monday through Thursday.

**SUMMER SCHOOL
REGISTRATION DETAILS WILL
BE SENT TO YOU IN THE SPRING**



DISTRICT 211 COMMUNICATIONS/NOTIFICATIONS

District 211 and Hoffman Estates High School frequently use email to share information with parents and have adopted a coded message system to help parents identify the relative importance of various email messages. The code is displayed directly in the email subject line. The specific codes are:

Level Green

General information from the school or District about scheduled school events or news that does not require immediate attention.

Level Yellow

Public safety/awareness information regarding an incident in or near the school that warrants attention but does not pose any threat to the school. For example, local law enforcement might respond to a location near the school, but the incident is not threatening school safety.

Level Orange

Weather/school safety alerts regarding an event that will affect school operations. All weather-related school closures will be level orange messages.

Code Red

Emergency communications and information about an incident that is likely to occur or has already occurred. An active threat against the school that resulted in injury, or a confirmed fire that resulted in injury and school evacuation are examples of incidents that would be shared under this code.

In addition to email, the District will send text messages to mobile devices and place phone calls to communicate Level Orange and Code Red messages. It is important that parents maintain accurate contact information within the Infinite Campus portal in order to receive all types of communications from the school and District. You can access the portal at <https://campus.d211.org/campus/portal/township.jsp>.



HOFFMAN ESTATES HAWK BOOSTERS MEMBERSHIP

The Hoffman Estates High School parent booster club supports curricular and extra-curricular activities, bringing home and school into a closer relationship. All parents are encouraged to join, and although involvement and volunteerism are encouraged, they are not required. Membership fees can be paid as part of the school registration process and will be available on My School Bucks throughout the school year.

We appreciate your support!

Your membership fees are used to support the entire HEHS Community. Last year the Boosters provided (9) \$1000 scholarships to graduating seniors, planned the annual Trivia Night as a fundraiser for our Hawk's Nest and all teams and clubs, planned Post Prom and covered half the cost of the ticket, provided a string bag to all incoming freshmen, provided several graphic banners throughout the school, and much more. Your membership is appreciated as well as any amount of time and level of commitment possible. Please consider sharing your skills and talents!

All-Age Athletic Passes are good for adult/child admission; however, they are not valid for IHSA playoff games. D211 students are admitted free to football and basketball games with a school ID.

Additional All-Age Athletic Passes (\$15 each) will be available for purchase at the Hawk Boosters Membership table at Parent Open House at the first 2 home football games. Hawk Booster Membership is required to purchase additional athletic passes.

Incentive items can be chosen and picked up at the Hawk Boosters Membership table at Curriculum night and the first 2 home football games. Please contact Shannan Pelayo at hehshelpmember@gmail.com for additional passes or questions.

Memberships without incentives will mailed.

Basic Membership: \$30

Includes a \$5 off school store coupon and a small gift.

Basic Membership PLUS: \$45

Includes the Basic Membership benefits plus (2) all-age athletic passes good for admission to home varsity football and basketball games.

Deluxe Membership - Athletics: \$65

Includes the Basic Membership benefits and (4) all-age athletic passes good for admission to home varsity football and basketball games.

Deluxe Membership - Theater: \$65

Includes the Basic Membership benefits and (4) Theater passes good for admission to a musical or a play.

Deluxe Membership PLUS: \$90

Includes the Basic Membership benefits and (6) all-age athletic passes good for admission to home varsity football and basketball games.

Honored Hawk Membership: \$100

Includes the Basic Membership benefits and (4) all-age athletic passes good for admission to home varsity football and basketball games, (2) Theater passes good for admission to a musical or play, and your choice of 1 of the 3 incentive items.

Graduation Yard Sign: \$15

Proudly show your pride for your Class of 2023 Hoffman High Estates High School senior with a Graduation Yard Sign. Sign will be full color, single sided, and will come with a metal frame that easily slides into the ground. Signs will be available in late April/early May 2023.

Hoffman Hawk Yard Sign: \$15

Proudly show your Hawk Pride all school year. Sign will be full color, single sided, and will come with a metal frame that easily slides into the ground. Signs will be available for pick up at the Hawk Boosters Membership table at Curriculum night and the first 2 home football games.

INFORMATION FOR SENIORS

Senior year is an exciting and important time in the life of every high school student. Throughout the school year, members of the Class of 2023 and their parents will receive information detailing key dates and events specific to preparation for the student's life after high school. General information to guide families as they navigate 12th grade expectations and requirements is intended to build awareness about high-interest topics. Seniors electing to graduate early should consult with their school counselor for information specific to early graduation.

Graduation Information

Senior Portraits and Yearbooks

District 211 contracts with Lifetouch to take students' annual school photos. In order to appear in the Hoffman Estates High School yearbook, all seniors must have their photo taken by Lifetouch. Photographs from other sources will not be accepted for use in the yearbook. Schedule information and retake dates will be sent directly to students and parents by Lifetouch. Parents can also access the Lifetouch website at <https://lifetouch.com> for more information.

Cap and Gown

Seniors will be measured for cap and gown on Thursday, November 17, 2022. Caps and gowns will be distributed to students on Thursday, April 20, 2023.

Graduation Information

Hoffman Estates High School will host graduation for the Class of 2023 on Friday, May 19, 2023 at the NOW Arena. Students will need to provide their own transportation to the rehearsal. Students will receive details about the Senior Breakfast from our senior class sponsors, Michelle Stephens and Tera Andel. Mrs. Stephens can be reached at mstephens@d211.org and Mrs. Andel can be reached at tandel@d211.org.

College-bound Student Information

Transcripts

Students should request a copy of their 6th semester transcript to verify readiness for high school graduation and to use as a reference when completing college applications. All seniors will meet with their school counselor early in the school year to review the transcript, senior year course schedule, and verify post-high school plans.

Finalizing College Choices

No later than September, seniors should be prepared to narrow the list of colleges and universities to which they will send applications. Using information gathered during junior year guidance program activities in Xello and the D211 Student Readiness Plan, students should be well-informed about specific schools that align with their post-high school plans and financial status. Students are reminded to take advantage of allowable college visit absences to see college and university campuses first-hand.

College Applications

November 1 is the most widely recognized deadline for college applications. Students will need to verify application due dates with the specific schools of interest to make sure a key date is not missed. Students also need to make note of application fees some colleges and universities charge. It is recommended that students review their applications, and related essays, with their school counselor prior to submitting them.

Letters of Recommendation

Many college applications require the student to include one

or more recommendation letters. Typically, recommendations come from teachers who have had a positive impact on the student's high school experience. Students should personally request recommendation letters from their teachers (or others) and provide the person with at least two weeks notice about deadlines.

Scholarships

Hoffman Estates High School maintains a list of scholarships at <https://adc.d211.org/Page/5088> and students are encouraged to explore this list to find scholarships they may qualify for. Individual colleges and universities typically have many scholarships available as well. Students should explore the college and university websites to find details about those scholarships. Most scholarships have strict application deadlines.

Applying for Financial Aid

The Free Application for Federal Student Aid (FAFSA) becomes available on October 1. Students and parents will need to complete the FAFSA online at <https://studentaid.gov/h/apply-for-aid/fafsa> to determine the student's eligibility for Federal Student Aid based upon the parents' prior year's Federal tax return. Hoffman Estates High School will host a FAFSA workshop in the fall. Look for details about this event once the school year begins. All students must complete the FAFSA or FAFSA waiver as part of their graduation requirement.



FREQUENTLY ASKED QUESTIONS (FAQ)

Q: Where is my child's bus stop and what time does the bus pick up my child?

Parents can use the My Stop app to track their child's bus. More information about the My Stop app is available on the District 211 website at <https://adc.d211.org/cms/lib/IL49000007/Centricity/Domain/4788/Instructions%20for-Accessing-the-GPS-Mystop-Mobile-App.pdf>. Please call the Transportation Department at 847-755-6798 with any questions about bus services.

Q: Is Summer School required?

Some incoming Freshmen and rising Sophomores are identified for mandatory summer school programs to improve academic proficiency in reading, math or both. Eligible students, and their parents, will be notified in late January. See page 15 for more information about summer school.

Q: How do I register my child for an athletic team or extracurricular activity?

Parents use Infinite Campus to register for extracurricular athletic teams, clubs, and activities. Completing the registration process requires the parent to log onto the Infinite Campus portal. A menu of options is displayed on the left-hand side of the screen after logging in. Select Activity Registration. Follow the on-screen prompts to complete registration for the desired team and/or activity.

Q: Are there special eligibility requirements if my child wants to play sports?

All student-athletes must meet eligible requirements as set forth by the Illinois High School Association (IHSA) which include maintaining passing grades in at least 25 credit hours per week. District 211 has additional requirements for athletic eligibility that can be found online at <https://adc.d211.org/cms/lib/IL49000007/Centricity/Domain/2473/Eligibility-IHSA-D211.pdf>. Students transferring to Hoffman Estates High School from another high school will want to consult with the athletic director to discuss eligibility requirements.

Q: How does my child arrange to see college and university representatives who visit Hoffman Estates High School?

Our college counselor maintains a list colleges and universities that will be visiting Hoffman Estates High School during the school year. Students can access the

list online and sign up by completing the form located on the Hoffman Estates Schoology page <https://adc.d211.org/page/7049>.

Q: Where can I find information about scholarships my child might qualify for?

A list of scholarships is maintained on the school website at <https://adc.d211.org/Page/5088>. Students are encouraged to check the site regularly for updates. Be aware that the Harper Promise Scholarship is only available to students who began ninth grade at a District 211, District 214, or District 220 high school and applied to participate in the Promise program by December 15 of their freshman year.

Q: Does the school offer opportunities for my child to prepare for the SAT exam?

SAT preparation is embedded within the instructional strategies teachers use within their classrooms. In addition, a practice SAT exam for juniors is offered and students are able to use the results of that practice exam to identify specific skill areas for improvement prior to taking the State-sponsored SAT in April. The Khan Academy includes free resources for students to prepare for the SAT, and once linked to a student's College Board account, provides a customized course of study focused on the student's unique areas for growth in both mathematics and evidence-based reading and writing.

Q: How will I be notified if a school emergency exists?

Emergency situations will be communicated to parents via email, text message, and phone calls. Emergency emails will be designated using the District's communications/notifications color-coded system. See page 16 for more information about school communications.

Q: Whom should I call if my child is struggling with classwork?

Your child's teachers are the first line of support regarding questions about class assignments. Your child's school counselor also can assist with connecting your child to specific academic supports within the school.

CONTACT INFORMATION

Hoffman Estates High School

1100 West Higgins Road ❖ Hoffman Estates, IL 60169 ❖ 847-755-5600

Administration

Principal

Michael Alther
malthere@d211.org

Assistant Principal

Tom Mocon
tmocon@d211.org

Assistant Principal

Justin Onayemi
jonayemi@d211.org

Assistant Principal

Brittany Berleman
bberleman@d211.org

Assistant Principal

Anthony Ganas
aganas@d211.org

Student Services Director

Jennifer Beers
jbeers@d211.org

Athletic Director

Steven Lacni
slacni@d211.org

Dean of Students

Lindsey Hamma
lhamma@d211.org

Mary Dansdill

mdansdill@d211.org

Student Support Teams

Orange Team**Assistant Principal**

Justin Onayemi
jonayemi@d211.org
847-755-5614

Counselor

Angelica Cordova-Rajoo
acordovarajoo@d211.org
847-755-5643

Counselor

Ximena Herrera
xherrera@d211.org
847-755-5642

Counselor

Natalie Tarter
ntarter@d211.org
847-755-5648

Psychologist

Paulette Miller
pmiller@d211.org
847-755-5638

Social Worker

Jennifer Nieft
jnieft@d211.org
847-755-5634

Blue Team**Assistant Principal**

Brittany Berleman
bberleman@d211.org
847-755-5618

Counselor

Rebecca Bergstrom
rbergstrom@d211.org
847-755-5647

Counselor

David Maya
dmaya@d211.org
847-755-5646

Counselor

Michelle Stephens
mstephens@d211.org
847-755-5641

Psychologist

Hannah Buenzow
hbuenzow@d211.org
847-755-5923

Social Worker

Margaret King
mwking@d211.org
847-755-5655

White Team**Assistant Principal**

Anthony Ganas
aganas@d211.org
847-755-5616

Counselor

JC Brown
jcbrown@d211.org
847-755-5651

Counselor

Sabrina Braaten
sbraaten@d211.org
847-755-5644

Counselor

Patrick Evans
pevans@d211.org
847-755-5645

Psychologist

Kelly Hernandez
khernandez@d211.org
847-755-5637

Social Worker

Andres Acosta
aacosta@d211.org
847-755-5635

Department Chairs

Applied Technology

Dave Ligman
dligman@d211.org

Art & Media

Juan Medina
jmedina@d211.org

Business Education

Kerri Largo
klargo@d211.org

English

Robert Coakley
rcoakley@d211.org

English Learner

Alex Bernstein
abernstein@d211.org

Family and Consumer Sciences

Jessica Ecker
jecker@d211.org

Guidance

JC Brown
jcbrown@d211.org

Math

Mary Thomas
mthomas@d211.org

Music

Tom Chester
tchester@d211.org

Science

Todd Meador
tmeador@d211.org

Social Studies

Kevin Mallon
kmallon@d211.org

Special Education

Colleen Little
clittle@d211.org

Technology

Christina Ordonez
cordonez@d211.org

Wellness

Beth Roesner
broesner@d211.org

World Language

Cherea Sparkman
csparkman@d211.org