

HEALTH REQUIREMENTS



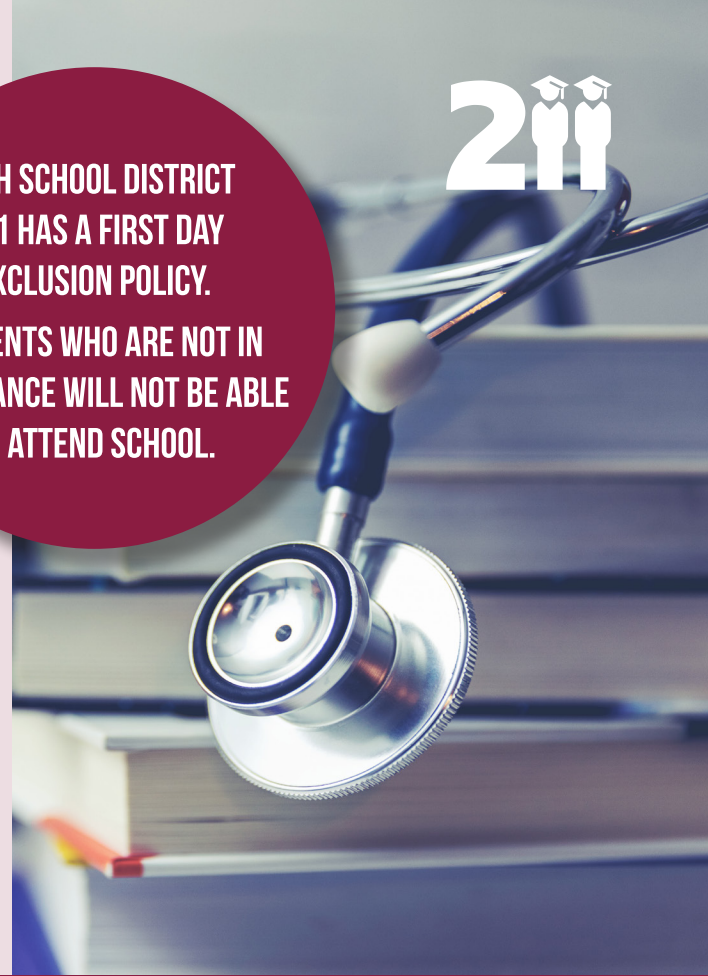
HIGH SCHOOL DISTRICT
211 HAS A FIRST DAY
EXCLUSION POLICY.

STUDENTS WHO ARE NOT IN
COMPLIANCE WILL NOT BE ABLE
TO ATTEND SCHOOL.

District 211 has a first day exclusion policy. Students who are not compliant with Illinois School Code health requirements will not be allowed to attend school until compliant. (105 ILCS 5/27-8.1)



Please visit <https://adc.d211.org/healthservices> to see full details about health requirements, required forms, and clinic locations.



GRADE 9

- ☐ **PHYSICAL & IMMUNIZATIONS** - Students must have a valid physical examination and up-to-date immunization records on file with their high school prior to beginning freshman year. Physicals must be dated on or after August 11, 2024. *Please note the IHSA sports physical cannot be used for 9th grade or transfer student school physicals.*
- ☐ **DENTAL EXAM** - Students must provide proof that an oral health examination was completed by a licensed dentist between November 15, 2024 – May 15, 2026.

GRADE 12

- ☐ **MENINGITIS** - Students must provide proof of the meningococcal vaccination (MCV4) given on or after the student's 16th birthday. Consult with their child's healthcare provider to determine if your student is in compliance.

TRANSFER STUDENTS IN GRADES 10, 11, 12

From another Illinois High School:

- ☐ Must provide a copy of their 9th grade physical with all immunizations.

From Outside Illinois:

- ☐ Must provide a copy of their high school physical with all immunizations from their previous high school. If their previous high school does not require a physical, the student has 30 days to complete this State of Illinois requirement.
- ☐ Must provide an Eye Examination Form dated within 12 months of the first day of school.

From Outside of the Country:

- ☐ Must provide all current updated immunizations, health records and TB Skin test requirements. The student has 30 days for all completed records to be on file with the Health Service Office.
- ☐ Must provide a certificate of child health examination (physical) form and an Eye Examination Form dated within 12 months of the first day of school.

EMAIL MEDICAL FORMS TO

Conant High School - CHSnurse@d211.org
Fremd High School - FHSnurse@d211.org
Higgins Education Center - CNTRnurse@d211.org
Hoffman Estates High School - HEHSnurse@d211.org

North Campus - NCAMnurse@d211.org
Palatine High School - PHSnurse@d211.org
Schaumburg High School - SHSnurse@d211.org
Therapeutic Day Schools - CNTRnurse@d211.org