



TOWNSHIP HIGH SCHOOL DISTRICT 211
STATEMENT OF REVENUES, EXPENDITURES, OTHER FINANCING SOURCES (USES)
AND CHANGES IN FUND BALANCE
ALL FUNDS FOR THE PERIOD
JULY 1, 2009 - JUNE 30, 2010

Revenue	All Funds	Educational	Operations/ Maintenance	Debt Service	Transportation	Municipal Retirement	Capital Projects	Working Cash	Fire Prev. / Safety
Local Sources*	216,587,016	162,147,403	29,788,702	5,722,243	6,618,448	8,909,408	11,020	3,388,860	931
State Sources	12,464,010	9,215,995	-	-	3,248,015	-	-	-	-
Federal Sources	7,419,067	7,419,067	-	-	-	-	-	-	-
Other Financing Sources	8,098	8,098	-	-	-	-	-	-	-
Total Revenue:	236,478,191	178,790,563	29,788,702	5,722,243	9,866,463	8,909,408	11,020	3,388,860	931

Expenditures

Salaries	125,946,371	110,121,073	10,745,117	-	5,080,182	-	-	-	-
Benefits	42,961,606	31,305,245	2,150,760	-	1,599,673	7,905,928	-	-	-
Purchased Services	9,509,876	5,088,136	3,469,489	-	952,252	-	-	-	-
Supplies	8,596,016	6,438,121	1,235,759	-	922,136	-	-	-	-
Utilities	4,067,923	-	4,067,923	-	-	-	-	-	-
Capital Outlay	17,300,868	3,188,033	2,393,751	-	769,195	-	9,754,535	-	1,195,353
Miscellaneous*	3,263,088	1,744,420	1,507,925	-	10,743	-	-	-	-
Tuition	5,586,098	5,586,098	-	-	-	-	-	-	-
Debt Services	10,092,000	-	-	10,092,000	-	-	-	-	-
Total Expenditures:	227,323,845	163,471,125	25,570,724	10,092,000	9,334,179	7,905,928	9,754,535	-	1,195,353

* Includes Vocational Building Construction Project Sales/Costs

Excess Revenue Over (Under) Expenditures	9,154,346	15,319,438	4,217,978	(4,369,757)	532,284	1,003,480	(9,743,515)	3,388,860	(1,194,422)
--	-----------	------------	-----------	-------------	---------	-----------	-------------	-----------	-------------

W/C Abatement Transfers (Out)	(2,000,000)	-	-	-	-	-	-	(2,000,000)	-
Debt Service Transfer In	2,000,000	-	-	2,000,000	-	-	-	-	-
Capital Projects Transfers In	2,000,000	-	-	-	-	-	2,000,000	-	-
O&M Abatement Transfers (Out)	(2,000,000)	-	(2,000,000)	-	-	-	-	-	-
Ed Fund Abatement Transfer In	2,000,000	2,000,000	-	-	-	-	-	-	-
Ed Fund Abatement Transfer (Out)	(2,000,000)	(2,000,000)	-	-	-	-	-	-	-
Transfer of Earned Interest In	91,391	-	-	-	-	-	91,391	-	-
Transfer of Earned Interest (Out)	(91,391)	-	-	(91,391)	-	-	-	-	-

FUND BALANCES, JULY 1, 2009 (Audited - Cash Basis)	133,579,340	79,230,409	8,540,747	11,043,460	5,245,415	4,754,275	7,980,394	15,590,219	1,194,422
FUND BALANCES, JUNE 30, 2010 (Cash Basis)	142,733,686	94,549,847	10,758,725	8,582,312	5,777,699	5,757,755	328,269	16,979,079	-



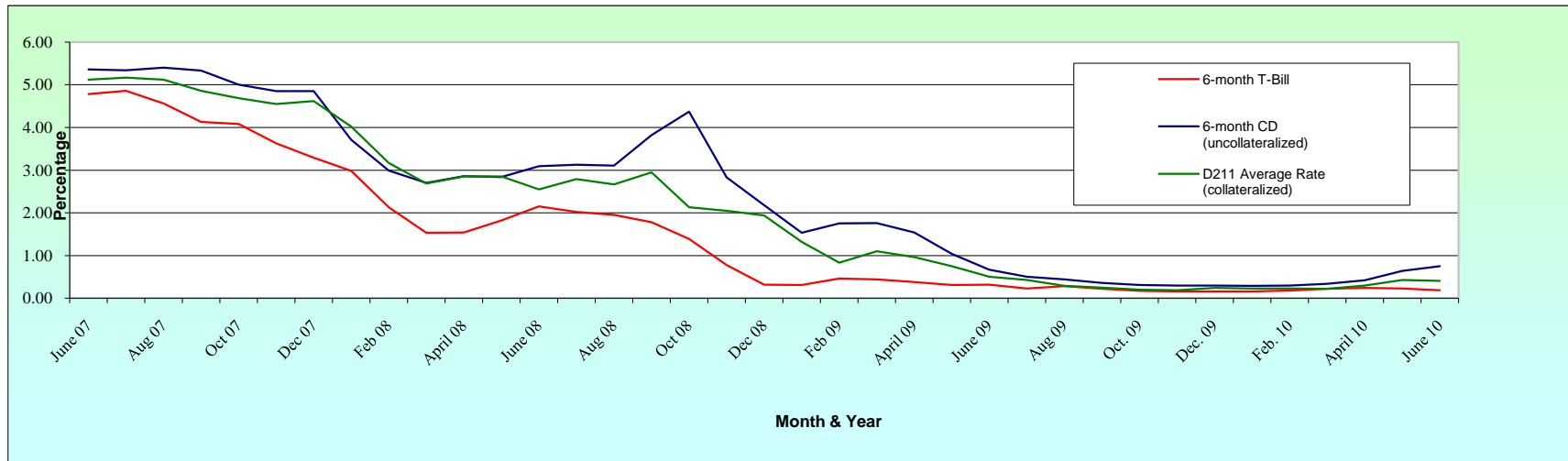
TOWNSHIP HIGH SCHOOL DISTRICT 211
STATEMENT OF ASSETS, LIABILITIES AND FUND BALANCE ARISING FROM CASH TRANSACTIONS
STATEMENT OF POSITION FOR THE PERIOD
JULY 1, 2009 - JUNE 30, 2010

Current Assets	All Funds	Educational	Operations/ Maintenance	Debt Service	Transportation	Municipal Retirement	Capital Projects	Working Cash	Fire Prev. / Safety
Cash & Investments	135,378,947	87,195,108	10,758,725	8,582,312	5,777,699	5,757,755	328,269	16,979,079	-
Petty Cash	6,500	6,500	-	-	-	-	-	-	-
Vocational Projects for Resale	7,021,744	7,021,744	-	-	-	-	-	-	-
Flexible Benefits Deposit	150,000	150,000	-	-	-	-	-	-	-
Letter of Credit Deposit	176,495	176,495	-	-	-	-	-	-	-
Inter-Fund Receivable	-	-	-	-	-	-	-	-	-
Total Current Assets:	142,733,686	94,549,847	10,758,725	8,582,312	5,777,699	5,757,755	328,269	16,979,079	-
Liabilities/Fund Balance									
Liabilities -- Inter-Fund Payable	-	-	-	-	-	-	-	-	-
Fund Balance	142,733,686	94,549,847	10,758,725	8,582,312	5,777,699	5,757,755	328,269	16,979,079	-
Total Liabilities/Fund Balance:	142,733,686	94,549,847	10,758,725	8,582,312	5,777,699	5,757,755	328,269	16,979,079	-



**INVESTMENT SUMMARY FOR PERIOD ENDING
JUNE 2010
(000's)**

Period Ending	Northern Trust General Account Balance	Cash Flow Balance	Investments Purchased This Month	Average Interest Rate	Interest Earnings From Investments Matured This Month	Amount of Interest Earnings Fiscal YTD	Total Outstanding Investments
FISCAL YEAR 2010							
JUNE 2010	814	502	19,713	0.41%	40	745	135,121
MAY 2010	651	464	14,249	0.43%	67	705	161,284
APRIL 2010	966	635	14,497	0.30%	16	638	173,809
MARCH 2010	644	397	88,985	0.22%	17	622	180,952
FEBRUARY 2010	944	446	25,097	0.23%	11	605	114,706
JANUARY 2010	961	601	12,889	0.23%	21	594	108,242
DECEMBER 2009	806	423	71,228	0.24%	27	574	117,600
NOVEMBER 2009	1,632	1,099	33,774	0.19%	111	547	71,808
OCTOBER 2009	917	615	14,241	0.20%	122	436	72,072
SEPTEMBER 2009	1,298	797	10,234	0.25%	133	314	90,539
AUGUST 2009	1,110	532	15,274	0.29%	88	181	107,733
JULY 2009	1,268	527	13,573	0.43%	93	93	116,847
FISCAL YEAR 2009							
JUNE 2009	896	618	26,407	0.50%	350	4,990	126,703



CONSENT AGENDA ITEM

**TOWNSHIP HIGH SCHOOL DISTRICT 211
STUDENT ACTIVITY, TRUST FUND
AND CONVENIENCE FUND REPORT
FOR THE PERIOD ENDING
JUNE 2010**

	Balance 5/31/2010	Current Receipts	Current Transfers	Current Disbursement	Balance 6/30/2010
District	73,791.15	2,342.23	-	31,883.52	44,249.86
Palatine	364,563.71	43,829.60	-	126,909.04	281,484.27
Fremd	544,955.08	113,210.07	(242.40)	306,343.09	351,579.66
Conant	364,344.11	34,367.77	(100.00)	143,519.79	255,092.09
Schaumburg	304,755.09	68,195.43	-	105,413.38	267,537.14
Hoffman Est.	268,165.76	46,489.68	342.40	95,187.65	219,810.19
Academy South	-	-	-	-	-
Total Funds	\$ 1,920,574.90	\$ 308,434.78	\$ -	\$ 809,256.47	\$ 1,419,753.21
Investments	(1,034,535.88)	(44.05)	-	-	(1,034,579.93)
Cash in Bank	\$ 886,039.02	\$ 308,390.73	\$ -	\$ 809,256.47	\$ 385,173.28

**SUMMARY REPORT
FISCAL YEAR TO DATE**

	Balance 7/1/2009	F.Y.T.D. Receipts	F.Y.T.D. Transfers	F.Y.T.D. Disbursement	Balance 6/30/2010
District	96,286.00	1,283,116.80	(28,222.88)	1,306,930.06	44,249.86
Palatine	309,067.74	653,680.65	5,786.00	687,050.12	281,484.27
Fremd	352,560.98	1,072,979.86	4,602.54	1,078,563.72	351,579.66
Conant	271,248.14	704,556.45	5,886.00	726,598.50	255,092.09
Schaumburg	254,067.93	708,393.64	6,127.94	701,052.37	267,537.14
Hoffman Est.	245,454.83	557,790.90	5,820.40	589,255.94	219,810.19
Academy South	-	594.00	-	594.00	-
Total Funds	\$ 1,528,685.62	\$ 4,981,112.30	\$ -	\$ 5,090,044.71	\$ 1,419,753.21
Investments	(1,033,766.89)	(813.04)	-	-	(1,034,579.93)
Cash in Bank	\$ 494,918.73	\$ 4,980,299.26	\$ -	\$ 5,090,044.71	\$ 385,173.28