



Township High School District 211

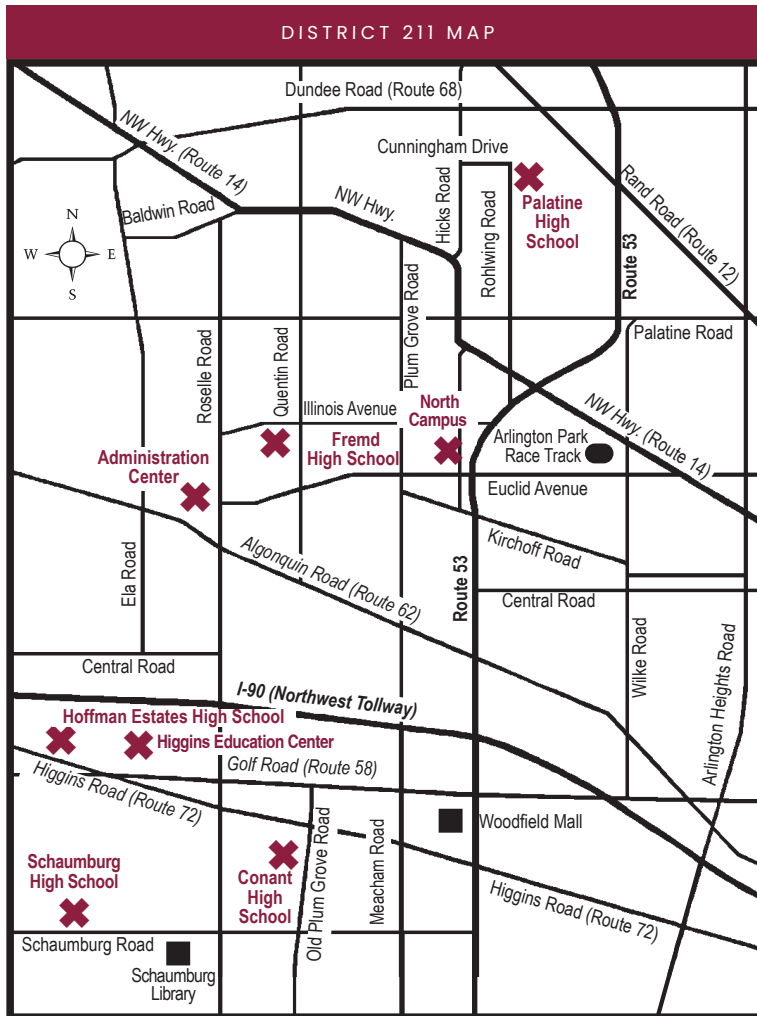
# 2019-2020 PAFR

**Popular Annual Financial Report**  
For the Period Ending June 30, 2020

D211 BY THE  
**NUMBERS**



# WELCOME



## To the Popular Annual Financial Report

Township High School District 211 serves the communities of Hoffman Estates, Inverness, Palatine, Schaumburg, and portions of Arlington Heights, Elk Grove Village, Hanover Park, Rolling Meadows, Roselle, South Barrington, and Streamwood in the northwest suburbs of Chicago.

High School District 211's five high schools serve grades 9-12: James B. Conant, William Fremd, Hoffman Estates, Palatine, and Schaumburg High Schools. Each school has earned full recognition status by the State Superintendent of Schools of Illinois. All five high schools have received the United States Department of Education's Blue Ribbon Secondary Schools Award, and Palatine and Fremd High Schools have been recognized twice. High School District 211 also has two alternative education schools, District 211 North Campus and Higgins Education Center, which serve approximately 175 students.



# CONTENTS

## OVERVIEW

A Message from the Superintendent	04
Township High School District 211 Mission and Value Statements	05
District 211 Fast Facts	06
Financial Position	07
Revenues and Expenses	08-09
Capital Projects Update	10-11
Educational Update	12-13
Township High School District 211 Board of Education	14
Township High School District 211 Administration	14
Blue Ribbon Schools of Excellence	15



# A MESSAGE FROM THE SUPERINTENDENT

As educators, we recognize the importance of providing up-to-date and transparent information to our community. We also understand the duty we have in managing the finances entrusted to us by taxpayers in a responsible manner while allowing us to provide quality education to every student. To that end, each year the District's Comprehensive Annual Financial Report provides a detailed account of our financial revenues, expenditures, and year-end position and is available on the District's website.

In 2016, the Board of Education accepted a comprehensive five-year Strategic Plan. As part of that Plan, this year we are again pleased to present the Popular Annual Financial Report (PAFR), which provides clear and transparent financial information in an easily understandable format that is accessible to the general public.

We also are pleased to note in this year's PAFR that the District has succeeded in achieving two additional objectives from the Strategic Plan while continuing to do more to provide for the needs of all students in District 211.

In last year's PAFR, we proudly announced that District 211 was in an unprecedented position of operating completely debt-free. Through hard work and financial diligence, we continue that trend through another year. Operating debt-free allows the District to operate efficiently without additional tax burden for community members and businesses during a time when some may be facing potential hardships.

Another objective listed in the Strategic Plan was to explore options for a 62-acre parcel of land which the District had purchased more than 50 years ago to build a possible sixth high school, if necessary. Through the 2019-2020 fiscal year, the District's land sale process progressed toward an application for development approval. The sale of this 62-acre parcel will optimize an asset that the District has held since the 1960s. Upcoming Board of Education discussions will include planned uses for the land sale proceeds.

An important aspect of the PAFR is to inform the community of how District 211 uses its finances in ways that work to benefit all our students. In a time where tensions can seem high, we continue to find new ways to build and promote equity across the District. To address this concern, we have created the District 211 Equity Team, which is responsible for including and affirming the voices of our community and our students and defining the organizational priorities and practices that will contribute to equity in District 211. You will be able to read more about the District 211 Equity Team in the Educational Update section of this report.

I am hopeful that you find the latest version of the Popular Annual Financial Report as a helpful resource for you to gain a better understanding of the use of District finances, and the benefits these funds provide for our students, their families, and the communities we serve.

Sincerely,

**Lisa Small**  
Superintendent

## For Additional Information and Resources



The PAFR contains highlights of District finances, with key data taken from the audited financial statements in the District's Comprehensive Annual Financial Report (CAFR) for the fiscal year ending June 30, 2020.

The District's CAFR is prepared in accordance with Generally Accepted Accounting Principles in the United States of America (GAAP). The PAFR summarizes financial activity in a non-GAAP, reader-friendly format and is unaudited. It does not include information on all District funds, full disclosures, or notes to the financial statements.

Some readers may be interested in exploring the more detailed financial statements (CAFR) found at <https://adc.d211.org/Page/6534>.

Questions, comments, and feedback about this report are encouraged by contacting the District's Business Office at (847) 755-6600.

*\* This publication includes photos that were taken prior to the implementation of COVID-19 safety protocols.*

*All District 211 facilities observe current IDPH mitigation recommendations.*



# OUR MISSION

Township High School District 211 serves the educational needs of the community inspiring all students to successfully contribute to the world.

*Approved by the Board of Education: August 18, 2016*



# OUR VISION

## **ACADEMIC RIGOR**

Our District values engaging curriculum built upon high-quality educational experiences to develop critical thinking.

## **ACCOUNTABILITY**

Our District values the charge of providing thorough and accurate information with all shared stakeholders.

## **COMMUNICATION**

Our District values an open exchange of information and perspectives.

## **COMPASSION, DIGNITY AND RESPECT**

Our District values and honors the strengths and diversity of all individuals.

## **EDUCATION AND LEARNING**

Our District values the continuous pursuit of knowledge, preparation and readiness to pursue future endeavors.

## **EFFICIENCY**

Our District values systemic measures and practices to optimize the community's resources throughout the organization.

## **FINANCIAL INTEGRITY**

Our District values strong fiscal management and reporting practices to ensure the highest degree of financial stewardship.

## **INNOVATION**

Our District values continuous improvement to advance educational and operational practices.

## **OPPORTUNITY**

Our District values fostering a comprehensive array of enrichment experiences to support all aspects of student development.

## **SAFETY**

Our District values safeguarding the welfare of all by providing a positive and respectful environment.

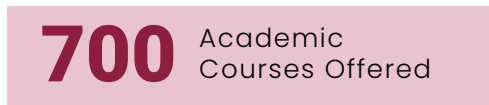
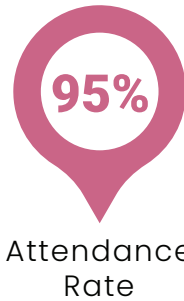
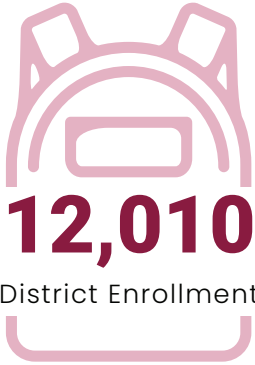
## **WELLNESS**

Our District values cultivating the healthy physical, social and emotional well-being of all.

*Approved by the Board of Education: August 18, 2016*

# DISTRICT 211 FAST FACTS

2019-2020 School Year



**9,000** STUDENTS BUSED Daily

**1.2m** SCHOOL BUS MILES Driven Annually

## DISTRICT-WIDE, IT SUPPORTS



**16,000**  
iPads



**4,500**  
PCs

**2,092**  
Total Staff



**808**  
Teachers



**134**  
National Board Certified Teachers



**\$20,365**  
Operating Expense Per Pupil



**District 211 Boundaries**  
Palatine & Schaumburg Townships

**62** Sq. Miles



**Square Feet of**  
District 211 Facilities

**2.3** Million



**Acres of**  
Building Grounds

**230**



**Number of**  
District 211 Buildings

**8**

# FINANCIAL POSITION

## Summarized Financial Reports

The PAFR contains summarized highlights of District finances, with key data taken from the audited financial statements in the District's Comprehensive Annual Financial Report (CAFR) for the fiscal year ending June 30, 2020. This information is presented in a non-GAAP format.

### Statement of Net Position

The Statement of Net Position provides a snapshot of the District's finances at the close of the fiscal year. Simply stated, it is total assets (what the District owns) minus total liabilities (what the District owes), plus and minus deferred outflows and inflows of resources (resources to be consumed or acquired in a future period). The difference between these amounts is the net position and represents the District's equity.

The Net Position is further broken down into three components:

- Net investment in capital assets represents the District's ownership of capital assets such as land, buildings, site improvements, vehicles, and equipment, less outstanding related debt.
- Restricted net position represents net assets that can only be used for a specific purpose as designated by law. These purposes include pension funding, capital projects, debt repayment, operations and maintenance and student transportation.

- Unrestricted net position represents amounts that may be used for any general legal purpose of the District.

The District's overall net position increased favorably from the prior year by \$2.9 million.

Statement of Net Position in millions \$			
	JUNE 30, 2018	JUNE 30, 2019	JUNE 30, 2020
<b>ASSETS</b>			
Current & other assets	\$238	\$227	\$248
Capital assets	219	222	223
Total Assets	<u>457</u>	<u>449</u>	<u>471</u>
<b>LIABILITIES</b>			
Current liabilities	16	10	12
Long-term liabilities	140	155	147
Total Liabilities	<u>156</u>	<u>165</u>	<u>159</u>
<b>DEFERRED INFLOWS OF RESOURCES, NET</b>	<u>129</u>	<u>106</u>	<u>131</u>
<b>NET POSITION</b>			
Net investment in capital assets	219	222	223
Restricted	41	28	42
Unrestricted	-89	-72	-84
<b>Total Net Position</b>	<u>\$171</u>	<u>\$178</u>	<u>\$181</u>

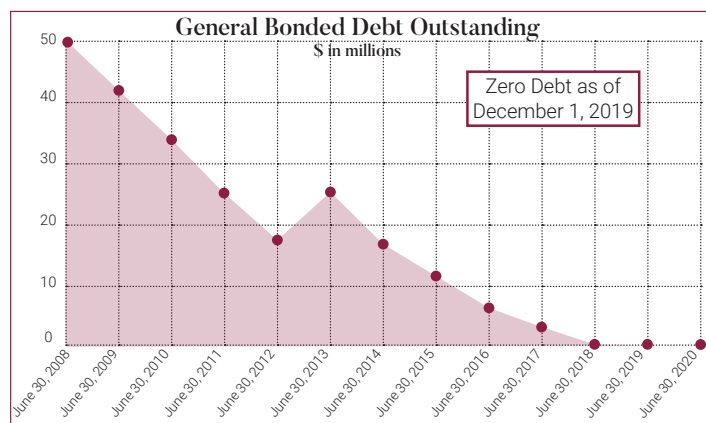
*Note: The long-term liabilities and negative unrestricted net position is due to the recording of Other Post-Employment Benefits under GASB 74, as implemented July 1, 2017. This GASB required the District to record its share of the Teachers' Health Insurance System outstanding obligations. This liability is for reporting only and does not impact the District's ability to meet its obligations in the future.*

### Outstanding Debt

District 211 is debt-free and committed to maintaining this status for as long as economics allow. The District completed its third straight year with no outstanding bonded debt and has no capital lease obligations. Operating debt-free signifies the District can self-fund its day-to-day operations and its capital project needs. This translates to lower property taxes for residents and businesses within the District's boundaries.

### Future Financial Outlook

District 211 is in a solid financial position to accomplish its educational and operational strategic goals over the next five years. Through prudent financial management over the past decade, the District has funded all academic and operational initiatives, paid off its debt, and accumulated appropriate levels of reserves (savings). Unforeseen expenses incurred as a result of the COVID-19 pandemic will be partially offset by emergency federal funding, while the remainder will be



paid from the current year budget and/or savings. Reserve balances are projected to increase next year due to the sale of land for \$17.75 million, then decline slowly to fund capital project requirements; however, these balances remain sufficient for the District to weather unpredictable changes in the timing of revenue receipts or new state mandates.



# REVENUES

## District-Wide Revenues by Source – 2020

62.3%

Property Taxes

31.1%

Operating Grants & Contributions

3.4%

State Formula Aid

1.9%

Charges for Services

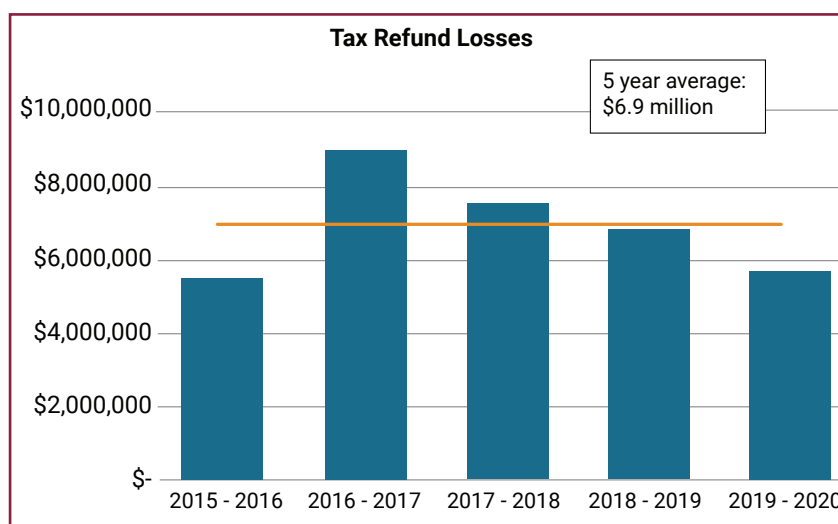
1.3%

Other

## How is District 211 Funded?

District 211 recognized \$365.7 million of revenue in 2020. The majority of the District's revenue comes from local property taxes. Through sound financial management, the District has been able to limit the increase in the property tax burden to local community residents and businesses. The second installment of 2018 property taxes levied in the fall of 2020 was reduced by \$2 million due to the District's participation in a property tax relief program. Property tax refunds directly offset revenue collected and while declining over the last three years, they are still significantly higher than three to four years ago. These refunds put additional financial pressure on the District due to loss of its primary source of revenue.

During fiscal year 2020, over 31% of the District's revenue was from Operating Grants and Contributions from the State of Illinois and the federal government. Approximately 86% of this revenue recognized was considered an "on-behalf" payment for pension benefits, funded directly by the State to the pension system. Other grants include funding for services and transportation for students with special needs, the school lunch and breakfast program, services for economically disadvantage students, and various other vocational and educational programs.



Charges for Services represents 1.9% of total revenue and consists of fees charged to students and others for textbook rental, meals, summer school and evening programs, facility rentals, and other special programs. The State Formula Aid and Other Revenue contribute 3.4% and 1.3% to the District's total revenue, respectively.

# EXPENSES

## District-Wide Expenses by Function – 2020

71.6%

Instruction

9.9%

Operations & Maintenance

7.4%

Pupil & Instructional Services

6.1%

Administration & Business

3.3%

Transportation

1.7%

Other



## How Does District 211 Spend its Funds?

Total expenses for the year ending June 30, 2020 were \$359.3 million. Funds spent on Instruction include salaries and benefits for classroom personnel and the materials and services required to support instructional programs. These costs total over two-thirds of the District's total costs.

Pupil and Instructional Services expenses include personnel costs and supplies for guidance counselors, social workers, school nurses, psychologists, speech pathologists, and other support service providers who assist students with needs outside the classroom.

Administration and Business Services represent costs to provide central support for the District – such as accounting, budgeting, planning, food service, and purchasing, as well as school administration.

Operations and Maintenance costs are monies spent to maintain the eight buildings and surrounding grounds throughout the District. Costs include salaries and benefits, custodial supplies, utilities, service agreements, and capital outlay. For the 2019-2020 fiscal year, major

capital outlay in this area included renovation to multiple parking lots, HVAC and boiler equipment replacements, security upgrades, carpet replacement, energy efficiency equipment purchases, and classroom renovations at multiple schools.

Transportation expenses include costs to operate and maintain the District's fleet of approximately 160 school buses and 40 vans. Fifteen new buses were purchased during the 2019-2020 fiscal year as replacements for aging equipment. Of the buses purchased, 14 of these new buses were propane-fueled which is a cleaner, more cost-effective fuel alternative.

Other expenses include salary, benefits, supplies, and purchased services for the technology, publications, and human resources departments.

During fiscal year 2020, the District made a special payment to the Illinois Municipal Retirement Fund in the amount of \$5 million to reduce the District's outstanding pension liability.



# CAPITAL PROJECTS UPDATE

## Building Improvements

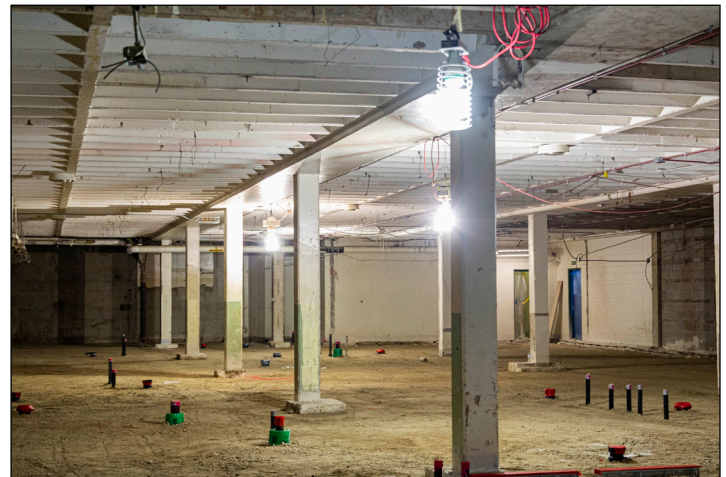
Township High School District 211 operates and maintains eight buildings across the District and prepares an annual Capital Projects budget to allocate funds for completion of necessary building improvements. Capital improvement projects are identified and prioritized through the Board of Education's 2016 Strategic Plan, 10-year Capital Improvement Plan, and routine maintenance and replacement schedules.

During the 2019-2020 fiscal year, the following District-wide facility improvement projects were in various stages of completion at a total cost of \$18.1 million. All facility improvement projects were funded through the District's existing operating reserves.

- Renovation of Fremd High School locker rooms and ensuing restrooms
- Renovation of all restrooms at Hoffman Estates High School
- Renovation of athletic fields at Conant High School
- Paving work at all schools
- Replacement of artificial turf and running track at Palatine and Hoffman Estates High Schools



The Illinois School Code requires school districts to perform a Fire Prevention and Life Safety Survey at a minimum of once every 10 years. Projects identified on the Survey were reviewed and approved by the Regional Office of Education and the Illinois State Board of Education. During summer 2020, the District completed several projects approved on the 2019 Survey, including roof replacements, mechanical equipment replacement, and other projects at multiple buildings.

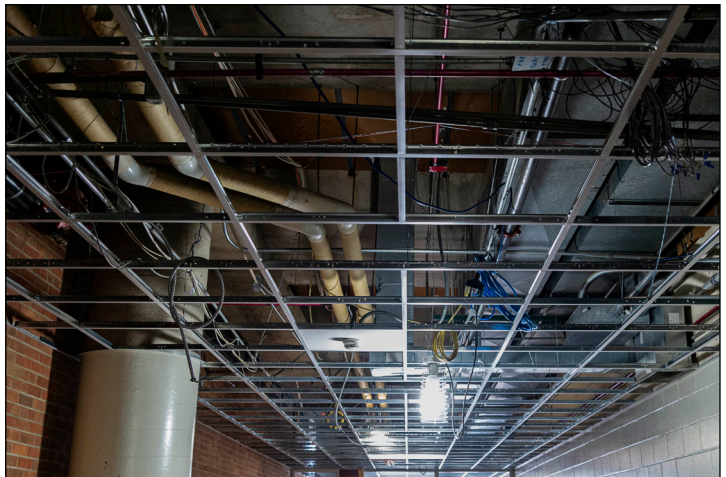




# CAPITAL PROJECTS UPDATE

## Future Facility Improvement Planning

The District's 2016 Strategic Plan calls for continued capital facility improvements over the next five- to 10-year period that support the needs of its facilities while also providing space to support academic programs. Barring no major legislative action that would negatively impact the financial status of the District, the Strategic Plan prioritizes the use of current reserve funds and future budget surpluses to fund facility improvement projects without the issuance of bonds.





# EDUCATIONAL UPDATE

## A Commitment to Educational Equity in District 211: The D211 Equity Team

Township High School District 211 believes that equity is a fundamental concept to both student success and its operation as a public school district. District 211 is fortunate to serve students and families that represent a large number of diverse cultures and backgrounds, and the District has a long history where concepts of equity are valued and integrated into the mindset, actions, and daily interactions of every student, staff member, and parent. District 211 has been, and continues to be, aware of the necessity to understand and respond to the ever-changing needs within both the school community and broader world.



Each District 211 school has implemented an equity framework based on school demographics and the needs of the student body and staff. This framework includes a collaborative partnership with Equal Opportunity Schools. Through this collaboration, District 211 has enhanced its ability to identify, recruit, support, and retain higher numbers of typically underrepresented students in rigorous coursework.

District staff regularly participates in professional learning opportunities related to equity, including training on trauma-responsive approaches, culturally responsive teaching methods, and social-emotional learning strategies. The District's work to increase student access, opportunity, and achievement has shown that when all stakeholders focus on promoting equity, student feelings of belongingness, academic achievement, and social-emotional health increase dramatically.





# EDUCATIONAL UPDATE



In order to support and enhance school-based equity work, a District-wide Equity Team has been created and is led by a core committee of students, staff members, and parents. The Team is organized into four committees, which also include members of the District 211 Board of Education as liaisons. The District 211 Equity Team is responsible for including and affirming the voices of its community; defining the organizational priorities and practices that contribute to equity in the District; analyzing qualitative and quantitative data to identify goals, metrics, and accountability measures; and, ultimately, creating an equity plan that will drive short-term and long-term systematic improvement across the District.



District 211's commitment to educational equity ensures that its decisions, policies, and practices are culturally sensitive and provide all students with access, opportunity, support, and resources. Pursuing educational equity means that each District 211 school continually assesses actions and decisions so that every student has the tools and supports necessary to achieve their highest potential. The District's ongoing commitment to growing a school community that embraces acceptance while denouncing and taking action against prejudice and discrimination allows the opportunity to consistently improve outcomes for students.



## 2020-2021 ADMINISTRATION

**Lisa Small**

Superintendent of Schools

**Mark Kovack**

Associate Superintendent for Student Services

**Lauren Hummel**

Chief Operating Officer

**Joshua Schumacher**

Assistant Superintendent for Curriculum & Instruction

**James Britton**

Director of Human Resources

**Renée Erickson**

Director of Special Education

**Jacquese Gilbert**

Director of Summer School & Community Outreach

**Gary Gorson**

Chief Technology Officer

**David Grelyak**

Facilities & Energy Manager

**Danielle Hauser**

Director of Instructional Improvement

**Matthew Hildebrand**

Director of Administrative Services

**Sandra Mir Imes**

Accounting Manager

**Mary Pat Krones**

Assistant Director of Special Education

**Stacy Lenihan**

Director of Food & Nutrition Services

**Kathe Lingl**

Assistant to the Superintendent/Assistant  
for Human Resources

**Diana Mikelski**

Director of Transportation

**John Pahlman**

Director of Facilities & Purchasing

**Thomas Petersen**

Director of Community Relations

**Barbara Peterson**

Controller & Treasurer

**Anita Seaholm**

Human Resources Assistant

**Lindsay Tiritilli**

Assistant Director of Special Education

**Eric Wenckowski**

Director of Athletics & Activities

## BOARD OF EDUCATION



**Township High School District 211 Board of Education**  
(seated left to right): Vice President Anna Klimkowicz;  
President Robert LeFevre, Jr.; Secretary Edward Yung.  
(Standing left to right): Kimberly Cavill; Steven Rosenblum;  
Peter Dombrowski; and Mark J. Cramer.

## Board of Education

**Robert LeFevre, Jr.,** President

**Anna Klimkowicz,** Vice President

**Edward Yung,** Secretary

**Kimberly Cavill**

**Mark J. Cramer**

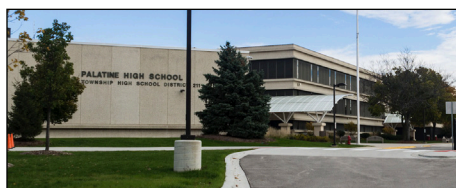
**Peter Dombrowski**

**Steven Rosenblum**

Major responsibilities of the Board of Education are to express and represent the view of the community in matters affecting education, determine education standards and goals, adopt policies for the administration of the school system, employ a superintendent of schools, authorize the appointment of teachers and other staff members, approve curriculum, secure money for school operational needs and building programs, and authorize expenditures.

# TOWNSHIP HIGH SCHOOL DISTRICT 211

## Blue Ribbon Schools of Excellence



### PALATINE HIGH SCHOOL

**1111 North Rohlwing Road**  
**Palatine, Illinois 60074-3777**

<b>Telephone:</b>	<b>Nickname:</b>
(847) 755-1600	Pirates
<b>Website:</b>	<b>School Colors:</b>
phs.d211.org	Scarlet & Gray
<b>Founded:</b> 1875	<b>Enrollment:</b> 2,581
<b>Opened:</b> 1977	<b>Principal:</b>
	Tony Medina



### WILLIAM FREMD HIGH SCHOOL

**1000 South Quentin Road**  
**Palatine, Illinois 60067-7018**

<b>Telephone:</b>	<b>School Colors:</b>
(847) 755-2600	Green & Gold
<b>Website:</b>	<b>Enrollment:</b> 2,574
fhs.d211.org	<b>Principal:</b>
<b>Opened:</b> 1961	Kurt Tenopir
<b>Nickname:</b>	
Vikings	



### JAMES B. CONANT HIGH SCHOOL

**700 East Cougar Trail**  
**Hoffman Estates, Illinois 60169-3659**

<b>Telephone:</b>	<b>School Colors:</b>
(847) 755-3600	Blue & White
<b>Website:</b>	<b>Enrollment:</b> 2,367
chs.d211.org	<b>Principal:</b>
<b>Opened:</b> 1964	Julie Nowak
<b>Nickname:</b>	
Cougars	

### D211 FACTS

- Township High School District 211 is one of the largest high school districts in Illinois.
- 2020-2021 District 211 Enrollment: 11,953
- 79% of District 211 graduates from the Class of 2019 enrolled in post-secondary education within 12 months of graduation
- Over 69% of students participate in extracurricular activities or sports; more than 60 clubs and organizations at each school, comprehensive program of 29 interscholastic sports.



### SCHAUMBURG HIGH SCHOOL

**1100 West Schaumburg Road**  
**Schaumburg, Illinois 60194-4150**

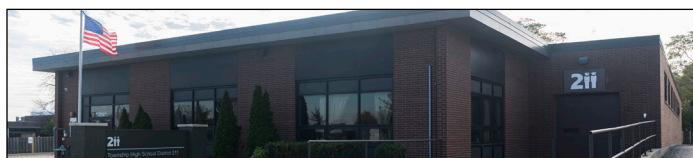
<b>Telephone:</b>	<b>School Colors:</b>
(847) 755-4600	Cardinal Red & Gold
<b>Website:</b>	<b>Enrollment:</b> 2,178
shs.d211.org	<b>Principal:</b>
<b>Opened:</b> 1970	Brian Harlan
<b>Nickname:</b>	
Saxons	



### HOFFMAN ESTATES HIGH SCHOOL

**1100 West Higgins Road**  
**Hoffman Estates, Illinois 60169-4050**

<b>Telephone:</b>	<b>School Colors:</b>
(847) 755-5600	Orange & Blue
<b>Website:</b>	<b>Enrollment:</b> 1,967
hehs.d211.org	<b>Principal:</b>
<b>Opened:</b> 1973	Michael Alther
<b>Nickname:</b>	
Hawks	



### DISTRICT 211 NORTH CAMPUS

**335 East Illinois Avenue, Palatine, Illinois 60067-7132**  
**Telephone:** (847) 755-6700 **Website:** ncam.d211.org  
**Founded:** 2005 **Opened:** 2016 **Nickname:** Bulldogs  
**School Colors:** Blue & White **Enrollment:** 48  
**Program Administrator:** Francesca Anderson



### HIGGINS EDUCATION CENTER

**1030 West Higgins Road, Hoffman Estates, Illinois 60169-4200**  
**Telephone:** (847) 755-6640 **Website:** cntr.d211.org  
**Founded:** 1975 **Opened:** 2015 **Nickname:** Shamrocks  
**School Colors:** Green & White **Enrollment:** 111  
**Program Administrator:** Jessica Orstead





## TOWNSHIP HIGH SCHOOL DISTRICT 211

*Extraordinary Opportunities. Innovative Teaching. Exceptional Learning.*

1750 South Roselle Road  
Palatine, Illinois 60067-7336  
Telephone: (847) 755-6600  
[adc.d211.org](http://adc.d211.org)