

CONTINUING EDUCATION

FALL 2025

REGISTER
TODAY!



SIGN
LANGUAGE



CANDLE
MAKING



CO-ED POWER
VOLLEYBALL



TOWNSHIP HIGH SCHOOL DISTRICT 211

UNITED STATES DEPARTMENT OF EDUCATION BLUE RIBBON SCHOOLS OF EXCELLENCE

Palatine • William Fremd • James B. Conant • Schaumburg • Hoffman Estates

DISTRICT 211 ARTICLES

• District 211 Marks Sesquicentennial

150 YEARS!

"When you stand firmly in your purpose and passion, your core becomes unshakable."

~Dr. Judith Campbell



Welcome to the Continuing Education catalog fall edition. I am excited and grateful to step into this learning community as the Superintendent of High School District 211. This catalog is a resource designed especially for you. Whether you're looking to sharpen your academic skills, explore your creative side, or simply try something new, this catalog is full of opportunities that reflect the richness and diversity of programs that you have direct access to. D211 is not just designed to support our students, we proudly offer spaces where learning and development continues throughout life, where anyone who chooses can return to the classroom with purpose and curiosity.

We know that having a sense of purpose drives personal growth. Perhaps you're aiming to advance your career, finish a goal you once set aside, or explore a new passion just for the joy of it. Whatever your reason, know that this catalog is more than a list of classes, it's an open door to possibility. Education at any stage of life can be transformative, and we are here to support you on that journey.

Passion is what brings learning to life. That's why our courses are designed not only to teach but to inspire, whether it's through the arts, academic exploration, or personal enrichment. As you turn the pages of this catalog, I encourage you to imagine the possibilities and consider taking that first step. We are honored to be your partners in learning, and we can't wait to see where this journey leads you.

A handwritten signature in black ink that reads "Dr. Judith Campbell".

Dr. Judith Campbell, Superintendent

Continuing Education Administrators

Dr. Judith Campbell, Superintendent

Ryan Zak, Director of Multilingual Programs and Community Outreach

Julie Frost, Administrator of Adult ELA

Anthony Ganas, Administrator of Alternative High School

Continuing Education Building Administrators

Amy Friel – *Palatine High School*

Tony Tosh – *Fremd High School*

Patrick Abraham/Johnny Satcher – *Conant High School*

Mission Statement

"Township High School District 211 serves the needs of our diverse community by providing relevant and rigorous learning experiences, opportunities for involvement and strong support systems that empower all students to reach their full potential."

Board Of Education

Steven Rosenblum, *President*

Kimberly Cavill, *Vice President*

Michelle Barron, *Secretary*

Peter Dombrowski

Anne Lopez

Jane Russell

Kenneth Van Dyke

Table of Contents

I.	2025 Calendar	2
II.	Frequently Asked Questions	3
III.	General Information	5
IV.	Registration Instructions	7
	a. Gold Cards for Seniors	7
V.	Continuing Education Form	8
VI.	Course Information	9
	a. Arts & Crafts	9
	b. Business & Finance	13
	c. Languages	13
	d. Music & Dance	14
	e. Personal Enrichment/Development	15
	g. Recreation & Fitness	17
	h. Woodworking	20
VII.	Community Outreach Programs	21
	a. Alternative High School	21
	b. Adult English Language Learners	23
	c. District 211 College and Career Preparation Classes	24
	d. District 214 Preparation & Credential Classes	25
	e. District 214 High School Equivalency Preparation	26
	f. Harper College High School Equivalency Certificate	27
	g. Reading for Adults	28
	h. Public Libraries	29
	i. Citizenship Test	30
	j. District 211 Articles	31

THIS PUBLICATION CONTAINS QR CODES

It's just a few easy steps to scan a QR code on your iPhone or Android mobile device.

- Open the camera app or QR code reader
- Focus the camera on the QR code by gently tapping the code
- Follow the instructions on the screen to complete the action



Continuing Education 2025 Fall Calendar

Thursday, August 28	Open House	All Schools, No Classes
Monday, September 1	Labor Day	All Buildings Closed
Monday–Saturday, September 8–13	Homecoming Week	Fremd High School, No Classes
Monday–Saturday, September 15–20	Homecoming Week	Schaumburg/Conant High School, No Classes
Thursday, September 25	1st Generation College Night	Palatine High School, No Classes
Monday–Saturday October 6–11	Homecoming Week	Hoffman Estates High School, No Classes
Wednesday, October 8	NHS Induction	Conant High School, No Classes
Monday, October 13	Columbus Day	All Buildings Closed
Thursday, October 23	Trick-or-Treat Festival	Palatine High School, No Classes
Saturday, October 25	Incoming Freshman Testing	All Buildings, No Classes
Wednesday, October 29	Halloween Community Event	Hoffman Estates High School, No Classes
Thursday, October 30	Halloween Community Event	Fremd High School, No Classes
Saturday, November 1	Craft Fair	Palatine High School, No Classes
Wednesday, Thursday & Friday, November 26, 27, 28	Thanksgiving	All Buildings Closed
Monday, December 8	Incoming Freshman Night	Schaumburg High School, No Classes
Tuesday, December 9	Incoming Freshman Night	Palatine/Fremd High School, No Classes
Wednesday, December 10	Incoming Freshman Night	Conant High School, No Classes
Saturday, December 13	Craft Fair	Fremd High School, No Classes
Friday, December 19	Winter Break	Begins at Close of School, All Buildings Closed

Changes in Catalog

It is sometimes necessary to make changes in the location, times, or dates of courses. We will make every effort to advise registered students of the changes. We appreciate your patience and understanding in such matters.

Cover Art • *Something for everyone!*

Volleyball, sign language, candle making and much more.

Frequently Asked Questions

Welcome to High School District 211's Continuing Education Program!

Our goal is to provide you with a learning environment that offers quality instruction in a relaxed, student friendly atmosphere. If you have any additional questions, please feel free to contact the Continuing Education Office at (847) 755-6820.

Where are classes held?

All of our classes are held on-site at one of our five high schools. Classes are offered on specific days at each building. Classes do not meet on Fridays.

What are the eligibility requirements to register for a continuing education class?

Registrants must be 18 years of age or older on the first day of class and may register online, by fax, by mail, by phone, or in person.

Are "Senior Citizen Discounts" applicable to any of the classes?

Senior citizens (*over the age of 62*) may apply for a Gold Card in order to register for many classes at a substantial discount. Please refer to the Registration Instructions in the catalog under the "Gold Cards" heading for further information.

Is the Continuing Education Catalog on the web?

Yes, the Continuing Education catalog is located on the District 211 website at <https://adc.d211.org/Adult-Continuing-Education>. Check the website for updated or new class information.



Are non-District 211 residents allowed to take Continuing Education classes?

Yes, out-of-district residents are welcome and must pay the listed tuition.

Will I receive confirmation of enrollment?

Yes, you will receive an email confirmation.

Once I register, how do I know where to go for my class?

Students should report to the assigned building and room number as printed in the course catalog. Additional information/directions may be obtained from the Building Supervisor in the Main Office beginning at 6:00 p.m. Enter the building through the main door – Door #1.

How do I know if there has been a change in a room number?

Occasionally, room changes are made after the catalog has gone to print. Changes are usually posted near the Main Office of their assigned school. Room verifications may be obtained from the Building Supervisor in the main office.

If I have registered for a class and find that I cannot attend my class, can I receive a refund?

Yes, per the refund policy as outlined in the course catalog.

(Continued)

Do you pro-rate tuition if a student is unable to make all the classes?

No. We do not pro-rate tuition for any of our classes.

May I sign up late for a class?

Yes, however, full tuition fees will apply.

Can I transfer to another class?

When class size permits, participants may request a transfer from one course to another. The tuition difference (if applicable) will be charged.

Can I make up classes that are missed?

Yes, depending on the class. Please contact the instructor of your class.

Are classes made up due to weather/emergency related issues or instructor absence?

Yes, as long as school calendars and available facilities will permit.

Do classes meet on school holidays?

No. Continuing Education classes follow the regular school year calendar and do not meet on scheduled school holidays. Please consult the "Continuing Education Calendar" located within this catalog for additional building specific dates when classes are not scheduled to meet.

What happens when classes are cancelled in their entirety?

The decision to cancel classes is based on enrollment. Every effort is made to contact individuals who have registered for classes that will not run. Full refunds are given to cancelled classes.

What happens when a class is full?

When a class reaches its programmatic capacity, a waiting list is established. If an opening occurs, or a new section is created, you will be notified.

Is transportation available for students enrolled in Continuing Education classes?

No, transportation for all courses and programs is the responsibility of the participant.

Are child care services provided for children of students?

No, child care services are not provided. All individuals in a class must be *18 years of age or older* and registered for the class. Children of students are **NOT** allowed to attend classes.

Is District 211 looking for Continuing Education instructors?

Yes, District 211 is always looking for talented individuals to teach classes. If interested, please contact the Continuing Education Department at (847) 755-6820.

General Information

Course Registration

Course registration begins Monday, August 11, 2025. See "Registration Instructions" for details if needed.

Course Confirmation

The Continuing Education office will send an email confirmation upon registration.

Tuition and Refund Policy

The High School District 211 Continuing Education Program plans its expenses and bases its budget upon full collection of tuition and fees. All fees are payable in advance and will not be refunded unless the class is cancelled or a registrant withdraws in writing prior to the official start date of the class. ***Only refund requests received prior to the first class meeting will be honored unless class has been cancelled by the Continuing Education Office. We will not honor requests for refunds for a class that has begun. Students who attend one or more meetings of a class will not be eligible for a refund.***

Refund requests must be in writing and directed to the Continuing Education Office at the High School District 211 Administration Building, 1750 S. Roselle Road, Palatine, IL 60067-7336. Course descriptions are designed to provide the prospective student with as much information about the class as possible. Specific questions about classes should be directed to the Continuing Education Office at (847) 755-6820. In-person refund requests may be made during the regular work hours at the Continuing Education Office. Telephone refund requests will not be honored.

Emergency Information



In the event that it is necessary to cancel evening classes because of inclement weather or an emergency situation, information will be available on the District 211 website (adc.d211.org) or via the news media. Day school cancellation **DOES NOT** automatically mean night school is cancelled.

Suggestions/Comments

District 211 Continuing Education is constantly striving to provide you with the highest quality classes and programs. We are confident that you will be pleased with these classes and our goal is to continue to provide quality services. Your suggestions, comments, or ideas for improvement are appreciated in order to help us do the best job possible.

School Codes

The majority of Continuing Education classes are held in District 211 High School buildings. The school codes and addresses are listed below. A map also is located below.

P.H.S. – Palatine High School, 1111 N. Rohlwing Road, Palatine

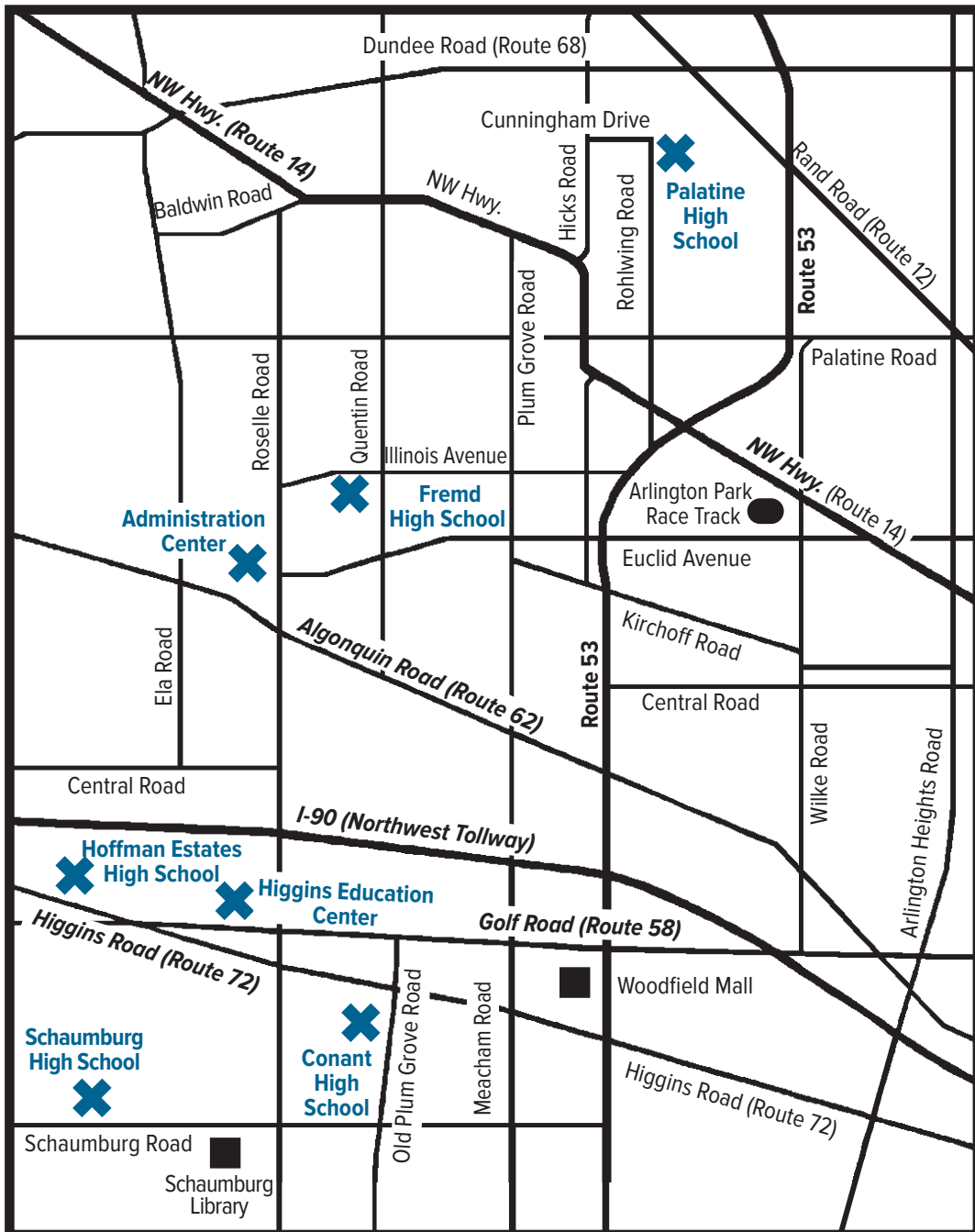
F.H.S. – William Fremd High School, 1000 S. Quentin Road, Palatine

C.H.S. – James B. Conant High School, 700 E. Cougar Trail, Hoffman Estates

S.H.S. – Schaumburg High School, 1100 W. Schaumburg Road, Schaumburg

H.E.H.S. – Hoffman Estates High School, 1100 W. Higgins Road, Hoffman Estates

H.E.C. – Higgins Education Center, 1030 W. Higgins Road, Hoffman Estates



Registration Instructions

When?

Monday, August 11, 2025, at 9:00 a.m.

Registration will be accepted until the start of the class or until class reaches its capacity. Instructor approval is necessary for registration to a class that is already in session.

Who?

Adults age 18 and over may enroll.

How?

Now FOUR Easy Ways to Register!

1. **ONLINE** – Visit <https://campus.d211.org/campus/store/township> and follow the instructions to the secure registration service.
2. **BY FAX** – Fill in the form located on the following page and fax it with your credit card information to (847) 755-6867 starting on Monday, August 11, 2025.
3. **BY MAIL** – Fill in the form located on the following page and mail it to: Continuing Education Office, 1750 S. Roselle Road, Palatine, IL 60067-7336. Check or credit card only – DO NOT SEND CASH IN THE MAIL.
4. **IN-PERSON** – Those who wish to register in-person may do so at the G.A. McElroy Administration Center, 1750 S. Roselle Road in Palatine, Monday through Friday, 9:00 a.m. until 3:30 p.m., starting on Monday, August 11, 2025.



Four Easy Ways to Pay

1. **CREDIT CARD** – Complete your VISA, MASTERCARD, AMERICAN EXPRESS, or DISCOVER number, expiration date, and security code on the registration form or online through Infinite Campus.
2. **DEBIT CARD** – Complete your VISA, MASTERCARD, AMERICAN EXPRESS, or DISCOVER number, expiration date, and security code on the registration form or online through Infinite Campus.
3. **E-CHECK** – Using your checking account.
4. **E-SAVINGS** – Using your savings account.

The Continuing Education Office is located in the Township High School District 211 G.A. McElroy Administration Center, 1750 S. Roselle Road in Palatine (just north of the intersection of Roselle and Algonquin Roads).

Gold Cards (Senior Citizen Discount)

Gold Card holders may register for many classes at a substantial discount. The Gold Card fee is listed in the course description. Write your Gold Card number in the space provided on the registration form or online.

To obtain a Gold Card, residents of District 211 who are 62 years of age or older must apply in-person at the District 211 Office (1750 S. Roselle Road in Palatine) Monday through Friday, 9:00 a.m. until 3:30 p.m., year-round.

Township High School District 211 – Continuing Education

Telephone: (847) 755-6820

Fax: (847) 755-6867

1750 South Roselle Road, Palatine, Illinois 60067-7336

(Please Print)

Name:

(Last)

(First)

Address:

(Street)

(City)

(Zip Code)

Email (REQUIRED):

Home

Work

District 211

Phone:

Phone:

Gold Card No.:

Course Number	Subject	Office Use Only	Location	Day	Fee

☐ VISA

☐ MasterCard

☐ Discover

☐ AmEx

☐ Check

☐ Cash

**Credit
Card. #**

**Exp.
Date**

**Security
Code**

I do hereby stipulate and agree to indemnify and forever hold harmless High School District 211 against any and all claims arising out of my occupancy of the school premises of the school district.

Signature (REQUIRED)

Date

Township High School District 211 – Continuing Education

Telephone: (847) 755-6820

Fax: (847) 755-6867

1750 South Roselle Road, Palatine, Illinois 60067-7336

(Please Print)

Name:

(Last)

(First)

Address:

(Street)

(City)

(Zip Code)

Email (REQUIRED):

Home

Work

District 211

Phone:

Phone:

Gold Card No.:

Course Number	Subject	Office Use Only	Location	Day	Fee

☐ VISA

☐ MasterCard

☐ Discover

☐ AmEx

☐ Check

☐ Cash

**Credit
Card. #**

**Exp.
Date**

**Security
Code**

I do hereby stipulate and agree to indemnify and forever hold harmless High School District 211 against any and all claims arising out of my occupancy of the school premises of the school district.

Signature (REQUIRED)

Date

No Receipt Will Be Mailed — Go to the First Class

Arts & Crafts

CANDLE MAKING WITH WOOD CRACKLING WICKS

Come and enjoy candle making! Brighten and enlighten yourself in candle making basics, while walking away with your own beautifully handmade crackling wood wick candle creation! We will use 100% organic soy wax, crackling wood wicks, and aromatherapy fragrances (optional to make candles). Immerse yourself in creativity and bask in your own creation with a wooden wick candle. **Class fee includes all supplies needed to create your candle. Optional: bring an apron for spills, paper and pen if you would like to take notes.**

Course #	Day	Dates	Time	Loc	Fee	Teacher	Max
A130-03	W	11/12 (1 day)	5:30–7:30 p.m.	F.H.S. Rm. 250	\$49	K. Taylor	12

WAX MELTS MADE WITH SOY

Join in this wax melt candle class for a fun, creative experience where students will learn to make their own scented soy wax melts. This class will cover the basics of wax melts, waxes, fragrances, melting and pouring molds. Students will get to select from a variety of scents to customize wax melt creations. Students will leave class with 2 to 4 (8 pack) shaped wax melts. **Optional: bring an apron for spills, paper and pen if you would like to take notes.**

Course #	Day	Dates	Time	Loc	Fee	Teacher	Max
A151-02	W	12/17 (1 day)	5:30–7:30 p.m.	F.H.S. Rm. 250	\$49	K. Taylor	12

CREATIVE PAINTING CLASS, EMPHASIS ON 3D TECHNIQUE

Be creative as you learn to paint a 3D still life with dynamic shading and vibrant textures with provided acrylic paints. We will also paint exciting and beautiful landscape scenes. **Please bring a small covered jar, one set of acrylic paints in tubes and two canvas panels of any size to the first class.** Don't delay, sign up today for a creative and fun class taught by a professional artist, Tobi Abrams. **No class: Sept. 25, Oct. 23, Nov. 6, 13 & 27**

Course #	Day	Dates	Time	Loc	Fee	Teacher	Max
A150-01	Th	9/4–12/18 (11 Weeks)	6:00– 8:30 p.m.	P.H.S. Rm. 252	\$135 \$125 (Gold Card)	T. Abrams	13

adc.d211.org/Adult-Continuing-Education

It is sometimes necessary to make changes in the location, times, or dates of courses. Revisions will be posted to our website.



HAVE FUN LEARNING TO DRAW!

Have fun and be creative as you learn to draw still lifes and landscape images/pictures with a variety of drawing materials (some materials are included in the class). We will aim to capture the beauty of nature with pencils, colored pastel pencils and ink. This class is taught by an award-winning professional artist, Tobi Abrams. **Don't Delay, Sign Up Today!**

Course #	Day	Dates	Time	Loc	Fee	Teacher	Max
A151-01	Tu	9/2–11/11 (11 Weeks)	6:00– 8:30 p.m.	P.H.S. Rm. 252	\$110 \$103 (Gold Card)	T. Abrams	13

CREATIVE DIGITAL PHOTOGRAPHY

The class is presented in a PowerPoint format. This class is for the digital photographer utilizing a camera that has interchangeable lenses (DSLR/Mirrorless) or is planning on purchasing one. The course will cover the basics of photography, from composition, lens selection, exposure, flash and processing of images on the computer. Also, subjects such as white balance, sharpening and file formats will be covered. Assignments will be made to practice key subjects and review of students' images will be made to discuss results. There will also be in class photo sessions to practice camera handling. Final day of class is reserved for one-on-one sessions to cover any individual questions.

Course #	Day	Dates	Time	Loc	Fee	Teacher	Max
A214-01	W	9/17–11/5 (8 Weeks)	7:00– 9:30 p.m.	F.H.S. Rm. 3	\$89 \$65 (Gold Card)	J. Hojnacki	10



CROCHET BABY HAT (INTERMEDIATE LEVEL)

This sweet little baby hat will help keep little ones warm and looking adorable too. Must already know how to crochet a chain, single, and double crochet stitches. While making this hat, you will also learn two new stitches as well as crocheting in the round. Also, make a pompom or a frilly pompom! This is a three-week class. **A supply list will be given upon registration.**

Course #	Day	Dates	Time	Loc	Fee	Teacher	Max
A430-01	W	8/27–9/10 (3 Weeks)	7:00– 9:00 p.m.	C.H.S. Rm. 110	\$69 \$65 (Gold Card)	J. Webster	8

adc.d211.org/Adult-Continuing-Education

It is sometimes necessary to make changes in the location, times, or dates of courses. Revisions will be posted to our website.



NEW

KNIT CABLE SCARF (INTERMEDIATE LEVEL)

Learn to make cables! This scarf is really beautiful and you can feel a real sense of accomplishment when finished. Cables can seem so overwhelming, but it is nice to have help when learning this new skill, and gain confidence making cables. It looks intimidating, but it's really not! Prerequisite is that you must already know how to knit and purl fairly well. This is a three-week class. **A supply list will be given upon registration.**

Course #	Day	Dates	Time	Loc	Fee	Teacher	Max
A431-01	W/M	9/24, 10/1, 10/6 (3 Weeks)	7:00– 9:00 p.m.	C.H.S. Rm. 110	\$69 \$65 (Gold Card)	J. Webster	8

NEW

VINTAGE VICTORIAN LACE CROCHET SCARF, SHAWL, OR BABY/LAP AFGHAN (INTERMEDIATE LEVEL)

This is just a lovely pattern that will earn you a lot of compliments! You may just make a beautiful scarf, but in this class, we will move forward with making more strips and learn to follow the pattern to “join as you go”. The instructor will give you other joining ideas as well. This is beautiful in white, color changing yarn, sparkly, or velvet. Use all one color, or choose a few for different strips. Prerequisite is that you are very experienced with your basic single and double crochet stitches. This is a three-week class. **A supply list will be given upon registration.**

Course #	Day	Dates	Time	Loc	Fee	Teacher	Max
A432-01	W	10/15–10/29 (3 Weeks)	7:00– 9:00 p.m.	C.H.S. Rm. 110	\$89 \$85 (Gold Card)	J. Webster	8

NEW

KNIT COWL OR SCARF (BEGINNER TO INTERMEDIATE LEVEL)

This cowl is an eye-catching pattern when done with color stripping yarn or a tweed type yarn. This is meant to be a cowl that can be raised up on your head if the weather gets windy or frigid! However, if you are not fond of a cowl, you can just leave as a scarf. Prerequisite is that you already know your knit and purl stitches. Learn to follow a pattern with a 6-row repeat. This is a three-week class. **A supply list will be given upon registration. No class: Nov. 12 & 26.**

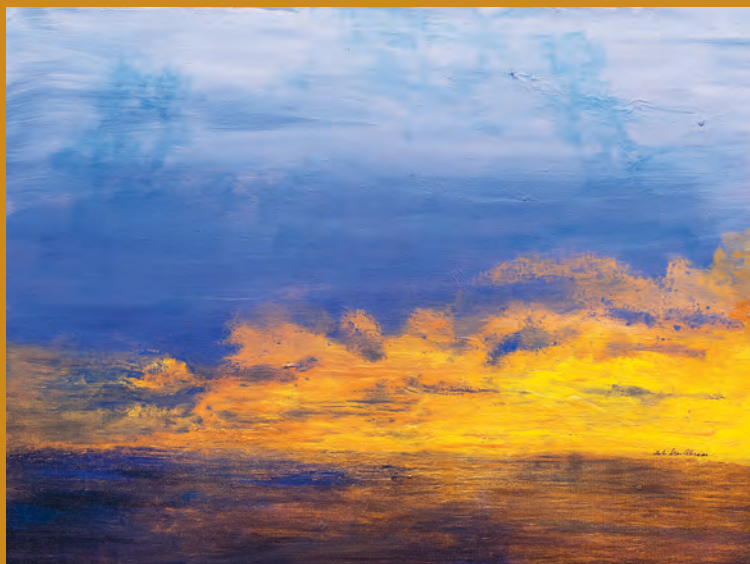
Course #	Day	Dates	Time	Loc	Fee	Teacher	Max
A433-01	W	11/5–12/3 (3 Weeks)	7:00– 9:00 p.m.	C.H.S. Rm. 110	\$69 \$65 (Gold Card)	J. Webster	8

adc.d211.org/Adult-Continuing-Education

It is sometimes necessary to make changes in the location, times, or dates of courses. Revisions will be posted to our website.



Continuing Education Fall 2025



ADVENTURES IN DRAWING
by Tobi Abrams



ADVENTURES IN PAINTING, EMPHASIS ON 3D TECHNIQUE
by Tobi Abrams



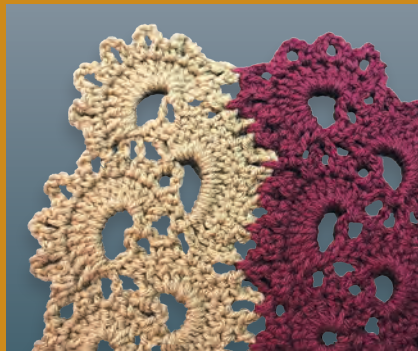
CANDLE MAKING WITH WOOD CRACKLING WICKS
With Kimberly Taylor



KNIT COWL
With Jeanne Webster



CROCHET BABY HAT
With Jeanne Webster



VINTAGE VICTORIAN LACE CROCHET SCARF
With Jeanne Webster



KNIT CABLE SCARF
With Jeanne Webster

Business & Finance

WILLS, TRUSTS, PROBATE, TRANSFER TAXES AND RETIREMENT BENEFITS

The course will provide an overview of structure and function of wills and trusts, including duties of executors, guardians, and trustees. The operation of the probate process will be discussed. The course will include a brief analysis of the new estate tax act. Post-death distribution rules for retirement benefits also will be covered. If time permits, advanced medical directives for health care will be addressed.

Course #	Day	Dates	Time	Loc	Fee	Teacher	Max
B220-01	M	11/3–11/10 (2 Weeks)	7:00– 9:00 p.m.	C.H.S. Rm. 229/230	\$29 \$15 (Gold Card)	J. Gottlieb	50

INVESTING IN STOCKS

No matter what your age, you can learn how to pick stocks and manage your stock portfolio, IRA or 401k. We will show you how to set up a well-diversified stock portfolio and then how to properly manage it. You will learn the differences between making investments, speculating, and buying products. You will also learn to determine your risk tolerance. Plus, we will show you how to manage after-tax accounts in a tax efficient way. So come learn a simple way to manage your assets more effectively. We can show you how to retire earlier and wealthier, or both! Instructor is a Registered Investment Advisor Rep. Materials included.

Course #	Day	Dates	Time	Loc	Fee	Teacher	Max
B495-01	Tu	9/23–9/30 (2 Weeks)	7:00– 8:30 p.m.	P.H.S. Rm. 200	\$45 \$35 (Gold Card)	K. Nyborg	50

Languages

BEGINNING SIGN LANGUAGE

This course is designed for those who are interested in learning to communicate with the hearing impaired. You will learn the alphabet, numbers, and basic sign language vocabulary which will enable you to carry on simple conversations, understand paragraphs, and accurately produce signs at the beginning level. Textbook is not necessary.

Course #	Day	Dates	Time	Loc	Fee	Teacher	Max
L108-01	Tu	9/16–11/18 (10 Weeks)	7:00– 9:00 p.m.	F.H.S. Rm. 144K	\$109 \$69 (Gold Card)	J. Kelly	20

adc.d211.org/Adult-Continuing-Education



It is sometimes necessary to make changes in the location, times, or dates of courses. Revisions will be posted to our website.

SPANISH I

Olé! Converse in Spanish the fast and fun way, enhanced with audiovisual materials. Students will learn simplified grammar to develop reading, speaking, and writing skills for travel, personal, and professional interests. Book used is SPANISH NOW! Level 1, 8th Edition published by Barron's.

No class: Sept. 9

	Course #	Day	Dates	Time	Loc	Fee	Teacher	Max
NEED BOOK*	L130-01	Tu	8/26–11/18 (12 Weeks)	6:30– 9:00 p.m.	F.H.S. Rm. 163	\$150 \$100 (Gold Card)	M. Louchios	20
HAVE BOOK*	L131-01	Tu	8/26–11/18 (12 Weeks)	6:30– 9:00 p.m.	F.H.S. Rm. 163	\$125 \$75 (Gold Card)	M. Louchios	

*Please choose the correct course code – if you do not have a current book, you must register for the full-price class.

ESL CONVERSATION CAFÉ

Get ready to visit a different kind of café! At this café, you will experience a unique menu filled with “appetizers” starting questions and the “entree” a conversation from one of the appetizers topics. One-and-a-half-hour discussions will cover a wide variety of topics – everything from hometowns and growing up, to staying healthy, and raising a family. There are three new topics every week. The main goals of this class are to **increase your confidence** in your English-speaking skills and to interact with native English speakers. You must be an ELL/ESL intermediate level (or higher) student to register for this class. See you at the café! **No class: Sept. 13, Nov. 29**

Course #	Day	Dates	Time	Loc	Fee	Teacher	Max
L205-01	Sa	9/6–10/11 (5 Weeks)	9:30–11:00 a.m.	F.H.S. PCR	\$40	J. Frost	12
L205-02	Sa	11/1–12/6 (5 Weeks)	9:30–11:00 a.m.	F.H.S. PCR	\$40	J. Frost	12

Music & Dance

BALLET FOR YOU

This fun workout uses the ballet barre to sculpt your body and awaken the ballet dancer in you, or begin your new adventure in ballet. Learn about sports injury prevention, and work on improving your balance, flexibility, and rhythm! **No class: Sept. 25, Oct. 23**

Course #	Day	Dates	Time	Loc	Fee	Teacher	Max
M120-01	Th	9/4–11/6 (8 Weeks)	7:15– 8:45 p.m.	P.H.S. Dance Studio	\$60 \$55 (Gold Card)	N. Scales	20

ADULT CHORUS

Step into the joy of singing with the D211 Adult Chorus, where music, community, and personal growth meet. This ensemble welcomes everyone, from absolute beginners to seasoned vocalists, offering a dynamic, no-pressure space to explore a wide variety of choral music. Together, we'll build skills in vocal technique, music reading, and ensemble performance, while connecting through the rich cultural stories behind each piece. Join us and rediscover the power Voices United in Lifelong Song! **No Class: Sept. 30, Oct. 7, Nov. 4**

Course #	Day	Dates	Time	Loc	Fee	Teacher	Max
M130-01	Tu	8/26–12/2 (12 Weeks)	7:00– 9:00 p.m.	H.E.H.S. Choir Rm. #9	\$75	M. Schlesinger	100

TAP DANCING I

Tap dancing is a great way to shape up those legs and have lots of fun. Learn the basic steps and a routine. No previous dance experience is necessary. Wear comfortable clothing and tap shoes. Have fun and get a real workout. **No class: Sept. 17, Oct. 8, Nov. 26**

Course #	Day	Dates	Time	Loc	Fee	Teacher	Max
M140-01	W	8/27–12/3 (12 Weeks)	7:00– 8:00 p.m.	C.H.S. Multi- Purpose Rm.	\$59 \$33 (Gold Card)	A. Coleman	25

Personal Enrichment/Development

GARDENING FOR BEGINNING AND INTERMEDIATE GARDENERS

This class is a single session class that provides the home gardener with the skills and confidence to design, plant and maintain a successful landscaped garden. The class will be presented in PowerPoint and will include diagrams, drawings, and numerous photographs. Included in this presentation will be the following: required and optional gardening tools, keeping yourself safe while gardening, basic garden design concepts, improving your soil, choosing, purchasing, and planting plants, and maintaining planter beds.

Course #	Day	Dates	Time	Loc	Fee	Teacher	Max
P120-01	Tu	9/16 (1 Day)	7:00– 9:00 p.m.	F.H.S. Rm. 118	\$35 \$30 (Gold Card)	J. Kowalski	40

adc.d211.org/Adult-Continuing-Education

It is sometimes necessary to make changes in the location, times, or dates of courses. Revisions will be posted to our website.



BEGINNING BRIDGE CARD GAME

A game for all ages whether you need a refresher course from playing in college or are new to the game, this is the class for you! We will learn bidding in the 21st century. Hands will be played and discussed each night. Each student will receive a book, "Bridge at a Glance", which is included in the cost of the class.

Course #	Day	Dates	Time	Loc	Fee	Teacher	Max
P130-01	Tu	9/9–11/4 (9 Weeks)	7:00– 9:00 p.m.	P.H.S. Media Center Cafe	\$60 \$45 (Gold Card)	L. Englbrecht	16

INTERMEDIATE BRIDGE CARD GAME

Now that you know basic bidding, it is time to take your game to the next level. In this class, we will discuss competitive bidding, defense, and some popular conventions. There will be time in every class to work on play of the hand.

Course #	Day	Date	Time	Loc	Fee	Teacher	Max
P131-01	W	9/10–11/5 (9 Weeks)	7:00– 9:00 p.m.	P.H.S. Media Center Cafe	\$60 \$45 (Gold Card)	L. Englbrecht	16

BEGINNING GENEALOGY AND BEYOND

Discover your family history and find your ancestors' stories. Using a list of over 25 free websites, this class will help you start your journey. Tips on using genealogical websites more efficiently and organizing your information will be discussed. Great refresher course too.

Course #	Day	Date	Time	Loc	Fee	Teacher	Max
P147-01	Tu	9/16 (1 Day)	6:30– 8:30 p.m.	F.H.S. Rm. 119	\$19 \$15 (Gold Card)	J. Schattner	25

adc.d211.org/Adult-Continuing-Education

It is sometimes necessary to make changes in the location, times, or dates of courses. Revisions will be posted to our website.



Recreation & Fitness

YOGA STRETCH

This slow-paced, gentle, yoga stretch class will help you to relax, unwind, and feel better. The class is a perfect way to end the day. We will move through gentle yoga poses, relaxing stretches, and dynamic balancing moves.

- Stretches out tight and overused muscles
- Relaxes the body through breathing techniques and deep stretching
- Balance is improved by engaging in simple yoga poses

Please bring a mat. *Come join us and see how much better you feel.* **No class: Sept. 16**

Course #	Day	Dates	Time	Loc	Fee	Teacher	Max
F107-01	Tu	9/9–12/2 (12 Weeks)	7:15– 8:10 p.m.	C.H.S., Multi-Purpose Rm.	\$119 \$109 (Gold Card)	S. Garcia	40

FITNESS FOR THE ACTIVE ADULT

This class is for active adults, 60 and above. Each class will include cardiovascular exercise as well as strength training and flexibility. Come have fun while you enjoy the benefits of staying fit.

Please bring a set of 1-3 pound handheld weights.

Course #	Day	Dates	Time	Loc	Fee	Teacher	Max
F120-01	Tu	9/9–11/25 (12 Weeks)	6:15– 7:10 p.m.	P.H.S., Dance Studio	\$119 \$109 (Gold Card)	S. Garcia	40

BEGINNERS YOGA

Beginner flow class where both new and experienced yoga enthusiasts are welcome. Come learn some of the most common poses found in a typical practice. This basic practice will loosen joints, help flexibility, and strengthen all major muscle groups. You will also improve your breathing techniques and mental focus. Class will be modified so that you can work out at your own level.

Please bring a mat.

Course #	Day	Dates	Time	Loc	Fee	Teacher	Max
F125-01	Tu	9/9–11/25 (12 Weeks)	7:15– 8:10 p.m.	P.H.S., Dance Studio	\$119 \$109 (Gold Card)	S. Garcia	40

adc.d211.org/Adult-Continuing-Education

It is sometimes necessary to make changes in the location, times, or dates of courses. Revisions will be posted to our website.



PURE PILATES

Are you looking to get lean without using dumbbells, barbells, or working out with heavy bulky equipment? Discover how you can transform your body with Pilates. You will see the results of the long lean look of Pilates even faster. Pilates strengthens muscles as well as improves flexibility, balance and posture. Watch your body tone and transform with each class. **Please bring a mat.**

No class: Sept. 16

Course #	Day	Date	Time	Loc	Fee	Teacher	Max
F130-01	Tu	9/9–12/2 (12 Weeks)	6:15– 7:10 p.m.	C.H.S., Multi-Purpose Rm.	\$119 \$109 (Gold Card)	S. Garcia	45

YOGALATIES

This ultimate workout fuses together the best of Barre, Pilates, and yoga classes. The fat-burning format consists of interval training, muscle shaping techniques, and isometric movements. Create a long, lean look using Pilates exercises while you build flat abs and a strong back. Strengthen core muscles to create stronger muscle tone, develop better balance, and become more flexible as you tone up and slim down. **No class: Sept. 18, Nov. 27**

Course #	Day	Dates	Time	Loc	Fee	Teacher	Max
F146-01	Th	9/11–12/11 (12 Weeks)	6:30– 7:25 p.m.	C.H.S., Multi-Purpose Rm.	\$119 \$109 (Gold Card)	S. Garcia	45

ZUMBA FITNESS

Zumba is a distinctive fusion of Latin and International dance music that combines high energy and motivation music with unique moves and combinations. The routines feature aerobic/fitness interval training with a combination of fast and slow rhythms that tone and sculpt the body. Not only is Zumba fun, but it is easy to do. Come and see for yourself what everyone is talking about.

No class: Sept. 15, Oct. 13

Course #	Day	Dates	Time	Loc	Fee	Teacher	Max
F151-01	M	9/8–12/8 (12 Weeks)	6:15– 7:10 p.m.	C.H.S., Multi-Purpose Rm.	\$119 \$109 (Gold Card)	S. Garcia	45

adc.d211.org/Adult-Continuing-Education

It is sometimes necessary to make changes in the location, times, or dates of courses. Revisions will be posted to our website.



ZUMBA GOLD

Zumba Gold is an easy to follow, low impact dance workout. This high energy class focuses on balance, range of motion, conditioning and coordination. Come ready to sweat, and prepare to leave empowered and feeling strong. **No class: Sept. 25, Oct. 23 & 25, Nov. 1, 27 & 29**

Course #	Day	Dates	Time	Loc	Fee	Teacher	Max
F152-01	Th	9/11–12/18 (12 Weeks)	6:15– 7:10 p.m.	P.H.S. Dance Room	\$119 \$109 (Gold Card)	S. Garcia	40
F152-02	Sa	9/6–12/13 (12 Weeks)	8:00– 8:55 a.m.	P.H.S. Dance Room	\$119 \$109 (Gold Card)	S. Garcia	40

DEEP STRETCH

This class is for anyone who works at a desk all day, would like to increase their range of motion and flexibility, or would like to relax, unwind, and feel better at the end of the day. The class will focus on stretching the hip flexors, IT bands, hamstrings, shoulders, back, chest and legs. This class also is good for anyone with sciatica, back pain, or injuries. Great for all levels. **Please bring a mat.**
No class: Sept. 18, Nov. 27

Course #	Day	Dates	Time	Loc	Fee	Teacher	Max
F181-01	Th	9/11–12/11 (12 Weeks)	7:30– 8:25 p.m.	C.H.S., Multi- Purpose Rm.	\$119 \$109 (Gold Card)	S. Garcia	40

CO-ED POWER VOLLEYBALL

This course is designed for the experienced person who likes to compete and participate with others. The class will be divided for competitive play each evening, with equal emphasis on competition and fun. A great mix of players for a fun workout. Games will be played using U.S.V.B.A. co-ed rules.
No class: Oct. 9

Course #	Day	Dates	Time	Loc	Fee	Teacher	Max
F200-01	Th	9/11–11/20 (10 Weeks)	8:00– 10:00 p.m.	H.E.H.S., Gym	\$85 \$45 (Gold Card)	J. Kelly	16

adc.d211.org/Adult-Continuing-Education

It is sometimes necessary to make changes in the location, times, or dates of courses. Revisions will be posted to our website.



CO-ED WATER POLO

The common goals of this class are to learn, improve skills, play effectively, and excel in the sport of water polo. Newcomers are welcome if you have experience or are new to the sport. *The class consists of drills and scrimmages.* **No class: Sept. 25, Oct. 23, Nov. 27**

Course #	Day	Dates	Time	Loc	Fee	Teacher	Max
F360-01	Th	9/4–12/11 (12 Weeks)	8:30– 10:00 p.m.	P.H.S., Pool	\$95 \$50 (Gold Card)	J. Grzybek	50

Woodworking

MACHINE WOODWORKING – INTRO TO WOODWORKING

For the novice as well as the intermediate woodworker, this course stresses the safe and correct operation of woodworking machinery. Students will acquire skills in using power machinery and/or wood turning while working on their own projects. You will learn project planning, wood preparation, assembly, and finishing techniques. Students are responsible for purchasing their own materials for class projects. Due to storage limitations, student projects must be removed nightly from the woodworking classroom. **Attendance is mandatory for the first three weeks of class due to safety concerns. NO EXCEPTIONS.**

Course #	Day	Dates	Time	Loc	Fee	Teacher	Max
W170-01	Tu	8/26–11/11 (12 Weeks)	7:00– 10:00 p.m.	P.H.S. Rm. 152	\$135 \$75 (Gold Card)	R. Jungmann	12

MACHINE WOODWORKING – ADVANCED

Project planning, advanced machine tool operations, and project construction will be the main topics for this class. **Prerequisite: Students must have completed the Beginning Machine Woodworking class in order to have the necessary safety instructions to move into the Advanced Machine Woodworking class.** Students are responsible for purchasing their own materials for class projects. Due to storage limitations, projects must be removed nightly from the woodworking classroom.

No class: Sept. 25, Oct. 23, Nov. 27

Course #	Day	Dates	Time	Loc	Fee	Teacher	Max
W180-01	Th	9/4–12/11 (12 Weeks)	7:00– 10:00 p.m.	P.H.S. Rm. 152	\$135 \$75 (Gold Card)	R. Jungmann	15

adc.d211.org/Adult-Continuing-Education



It is sometimes necessary to make changes in the location, times, or dates of courses. Revisions will be posted to our website.



COMMUNITY OUTREACH PROGRAMS



Alternative High School

Earn a District 211 Diploma!

Classes Meet Monday – Thursday Evenings

6:00 – 10:00 p.m. for 16 Weeks (*Beginning August 18, 2025)

Eligibility/Application

This program is designed to meet the educational needs of students whose high school education has been interrupted. Graduation requirements are similar to day school. Applicants must be at least 17 years of age. Students who enter the Alternative High School officially withdraw from their day school. Permanent records will remain on file with the Alternative High School. Preliminary registration requires the approval of the student services director, if a current District 211 student. Older students and students new to District 211 may contact the director of continuing education for additional information. Please call (847) 755-6820 with any questions. Childcare available upon request.

Location

Location for the Alternative High School Program is in-person at Hoffman Estates High School, 1100 W. Higgins Rd., Hoffman Estates.

Testing

Testing **MUST** be completed by all students registering for the fall semester, regardless if you have been in the program previously. All testing will be done at Hoffman Estates High School. The testing is a standardized reading test that the state requires of all individuals enrolled in the program. Testing usually takes approximately 1-1.5 hours. Dates of testing will be listed in the registration form online. You **MUST** choose a date to test.

*REGISTRATION BEGINS THE WEEK OF AUGUST 11, 2025

Registration is available online at <https://adc.d211.org/Alternative-HS>. Call the Continuing Education Office at 847-755-6820 or email aganas@d211.org.

ALL CLASSES AT THIS TIME WILL BE IN PERSON AT HOFFMAN ESTATES HIGH SCHOOL.



Alternative High School

General Information - Fall 2025

School Calendar

There is a mandatory orientation/testing night scheduled: The week of August 11, 2025, 6:00–9:00 p.m. AT HEHS, ROOM 37, FOR ALL STUDENTS. Schedule a time with Mr. Ganas.

Alternative High School **classes begin on MONDAY, AUGUST 18, 2025**. All classes are **16** weeks in length. The last class will vary depending upon the day of the week the class meets.

CLASSES MEET	CLASSES BEGIN	CLASSES END
MONDAY	Monday, August 18, 2025	Monday, December 8, 2025
TUESDAY	Tuesday, August 19, 2025	Tuesday, December 2, 2025
WEDNESDAY	Wednesday, August 20, 2025	Wednesday, December 3, 2025
TUESDAY & THURSDAY	Tuesday, August 19, 2025	Tuesday, December 9, 2025
MONDAY & WEDNESDAY	Monday, August 18, 2025	Monday, December 8, 2025

CLASSES WILL NOT MEET	
September 1, 2025 – Labor Day	November 26, 27, 2025 – Thanksgiving
October 13, 2025 – Columbus Day	

<p><i>Finals for Monday only will be given on Monday, December 8, 2025.</i></p> <p><i>Finals for Tuesday only will be given Tuesday, December 2, 2025.</i></p> <p><i>Finals for Wednesday only will be given Wednesday, December 3, 2025.</i></p> <p><i>Finals for Tuesday/Thursday will be given on Tuesday, December 9, 2025.</i></p> <p><i>Finals for Monday/Wednesday will be given on Monday, December 8, 2025.</i></p>
<p>Attendance is mandatory during the first week of classes and for all final exams. In addition, there is a minimum amount of seat time needed to earn credit for the class.</p>

Graduation

Scheduled for Wednesday, May 13, 2026, at 7:00 p.m., HEHS Auditorium.

Emergency Information

If it is necessary to cancel classes because of inclement weather or an emergency situation, we will notify the news media. Please check our website at adc.d211.org or listen to one of the local area radio stations. The announcement will be: “Palatine-Schaumburg High School District 211 evening classes have been cancelled.” The decision to cancel classes is made by 4:00 p.m. Day school cancellation **DOES NOT** automatically mean night school is cancelled.

Campus Regulations

All District 211 Facilities are tobacco, drug, and alcohol free. The possession and use of these substances on campus is prohibited. District 211 Rules and Regulations are in effect during the operation of the Alternative High School Credit Program.

Office

The Alternative High School office is located in **Room 49**. Please call the office at 847-755-5693.

English Language Acquisition (ELA)

Free Classes!

Levels range from beginner to advanced. Students will learn reading, writing, speaking, and listening skills with an emphasis on reading. Digital literacy skills are used and taught. Intermediate level classes add a Civics component to the curriculum. Classes are designed to increase your language skills in order to get a job and live in the community. Orientation, registration and testing must be completed by August 20, 2025.



Students are placed into a level from a state test and may not choose a level. Children of students are not allowed to attend class. Childcare is provided, but only at the Higgins Education Center. Register early, classes fill up quickly.

Requirements: Attend classes, study and practice on your free app! Students can only miss 4 classes per semester. Returning 2025 students sign up for one night to complete registration and take a test. New students will sign up for one night to complete the registration and go through orientation, then come back at a later date to test. Testing will take about 3 hours.

Mid-July, register online or make an appointment with Julie Frost, jfrost@d211.org or text at 331-444-2766 for in-person help, registration ends August 20, 2025. For Higgins Education classes, please choose orientation and testing at Conant or Palatine High Schools.

CONANT HIGH SCHOOL	
Program Orientation	In-person Mon. Aug 11 or 18 or Wed. Aug 13 or 20 at 6:30 p.m. Cafeteria Must Register!
Class Begin	Monday, August 25
Classes Held	Mondays and Wednesdays from 6:30–9:30 p.m.
No Classes	September 1, October 13, November 26

PALATINE HIGH SCHOOL	
Program Orientation	In-person Tues. Aug 12 or 19 or Thur. Aug 14 or 21 at 6:30 p.m. Cafeteria Must Register!
Classes Begin	Tuesday, August 26
Classes Held	Tuesdays and Thursdays from 6:30–9:30 p.m.
No Classes	August 28, November 27

HIGGINS EDUCATION CENTER	
Mon/Wed Classes Begin	Monday, August 25 from 6:00–9:00 p.m.
Tues/Thurs Class Dates	Tuesday, August 26 from 6:00–9:00 p.m.
No Classes	August 28, September 1, October 13, November 26 and 27

**Orientation will not be held at Higgins Education Center. Please attend orientation at Conant or Palatine high schools*

**Childcare services available only at Higgins Education Center.*

Emergency Information

In the event that it is necessary to cancel evening classes because of inclement weather or an emergency situation, information will be available on the District 211 website (adc.d211.org), via the new media. Day school cancellation **DOES NOT** automatically mean night school is cancelled.

ESL Conversation Café*

**As shown on page 14*

Course #	Day	Dates	Time	Loc	Fee	Teacher	Max
L205 - 01	Sat	9/6–10/11 (5 Weeks)	9:30 - 11:00 a.m.	F.H.S. PCR	\$40	J. Frost	12
L205 - 02	Sat	11/1–12/6 (5 Weeks)	9:30 - 11:00 a.m.	F.H.S. PCR	\$40	J. Frost	12

District 211

College and Career Preparation Classes

Registration for all classes begins in **August** online. Orientations and in person registrations are held at Conant High School and at Palatine High School on the same nights as ESL. Both Orientations are held in the school cafeteria. You can get help with registration on those evenings as well. During registration, you will choose a date to come in and test. Classes will begin at the beginning of September. Need help? Email Julie Frost at jfrost@d211.org or text her at 331-444-2766.

College and Career Ready Classes

Adult Basic Education helps students increase employability skills in reading, math, and digital literacy skills for transition into high-demand jobs or post-secondary education. Students are college ready. We teach valued work skills such as Critical Thinking, Information Technology Applications, Career Management, Resume Development, Soft Skills, Teamwork, Exploring Career Pathways, Presentational Skills, and Interviewing Techniques. Students will explore a career learning about the skills needed, personality traits, the starting salary, and the range of stackable credentials you can earn. You will learn about the job growth and the demand for the job in this area. **Students earn an Employment 101 certificate.**

Classes are in person for 14 weeks on Tuesdays/Thursdays from 6:30 p.m. to 9:30 p.m. at Palatine High School and via Zoom. Classes begin the first week of September.

Bridge to Healthcare Careers

In this class you will explore the various healthcare careers. You will choose one to explore more in-depth to learn about the skills, the personality traits, and the training requirements needed. Valued work skills are taught such as Critical Thinking, Information Technology Applications, Career Management, Resume Development, Soft Skill, Teamwork, Exploring Career Pathways, Presentational Skills, and Interviewing Techniques. Students will explore a career learning about the skills needed, personality traits, the starting salary and the range of stackable credentials you can earn. You will learn about the job growth and the demand for the job in this area. **Students earn an Employment 101 certificate.**

Classes are in person and online for 14 weeks on Mondays/Wednesdays from 6:30 p.m. to 9:30 p.m. at Conant High School and via Zoom. Classes begin the first week of September.

Support class for Medical Assistant I-CAPS 2

Students are required to enroll in a post-secondary tuition program to be in this class. We provide a free support class for Northwest Suburban College in Rolling Meadows. You will attend college there and co-enroll in our free support class to help you study for your credential exams, while improving your math and reading which will be needed for stackable credentials in post-secondary education. This class will be online and in person at the college. The support class is **free** and will run on Tuesdays before, or after the Northwest Suburban Class. It is offered from 1:30 to 5:30 p.m.

Entrepreneurship Bridge and I-CAPS 2

Want to start a business? Our Bridge class will prepare you for what this means and our I-CAPS 2 class will prepare you for the licensing exam. One or both will be offered this fall!

District 214

Preparation & Credential Classes

Reading 101

Read with understanding and fluency. Write clearly and build your vocabulary.

Location: Forest View Educational Center | 2121 S. Goebbert Road, Arlington Heights, 60005

Classes (13 weeks): Classes are in-person Monday and Wednesday mornings from 9:00 a.m. – 12:00 p.m. and online Tuesday and Thursday from 6:00 p.m. – 9:00 p.m. Students must be co-enrolled in another District 214 Adult Education class to be eligible.

Contact information: Nicol Engel at 847-718-7953 or email nicol.engel@d214.org.

Writing 101

Location: Forest View Educational Center | 2121 S. Goebbert Road, Arlington Heights, 60005.

Classes (13 weeks): Classes are in-person Thursday mornings from 9:00 a.m. – 12:00 p.m. Students must be co-enrolled in another District 214 Adult Education class to be eligible.

Contact information: Nicol Engel at 847-718-7953 or email nicol.engel@d214.org.

Bridge to Manufacturing

In this class you will explore the many possible careers in manufacturing and the skills and requirements for credentials. You will learn the starting salaries and the range of stackable credentials you can earn and where these can be found. You will also learn about the job growth and demand of these jobs in this area. Guest speakers are invited to attend. This class is online on Thursday evenings from 6:00 – 10:00 p.m. for 13 weeks starting in August. This class will lead to a credential program that we provide for free or to a local college.

Manufacturing Career Pathway, I-CAPS 2 (in person and online)

Students will attend classes on the pathway curriculum, and be provided an additional support class. This support class will be a lab class that aims to improve reading, vocabulary and math skills. Students will then take tests for National Institute of Metalworking Skills (NIMS), Quality Control (Measurements, Materials and Safety), and obtain NIMS Lathe and/or Mill credentials, at the end of two semesters.

Location: Wheeling High School and online.

Registration: See website: <https://www.ce.d214.org/career-pathways>.

Classes (12 weeks): Beginning in August, three evenings from 6:30 – 9:30 p.m.

To determine if you qualify or for more information contact Julie Frost at 847-718-7876 or email Julie.Frost@d214.org.



Educator Paraprofessional Bridge and ICAPs-2 (in person and online)

Want to work in a school setting as a Teacher Assistant? The Bridge course is designed to help you learn about which skills and educational background that are needed while earning an Employment 101 certification. Then the ICAP-s class prepares you for the exam that you need to pass. We help you find a job as well. Both classes work on language acquisition, resume development, interviewing, digital skills, reading skills and math skills needed to be successful.

District 214 Illinois High School Equivalency Preparation Classes

FREE! — Fall 2025

Please check the **Adult Education website now for Student Orientation, class registration and more information.** <https://ce.d214.org/adulted>.

Illinois High School Equivalency Certificate

We will prepare you to take the GED® Computer-Based Test.

Location: Forest View Educational Center 2121 S. Goebbert Road, Arlington Heights 60005.

Classes (13 weeks): All classes meet on Tuesday, Wednesday, and Thursday evenings from 6:00 – 9:00 p.m. and Monday, Tuesday and Wednesday mornings from 9:00 a.m. – 12:00 p.m.

Contact information: Nicol Engel at 847-718-7953 or nicol.engel@d214.org.

Spanish GED®

Clases de preparación para el examen de GED® en español

Certificado de Equivalencia de la Educación Preparatoria

Para determinar si usted califica para tomar la clase de preparación de GED® en español, tendrá que hacer un examen antes de que comience la clase. Este examen se hará el día de las inscripciones y tendrá una duración de 3 horas.

Ubicación: Forest View Educational Center (¡No hay cuidado de niños!).

Clases: martes y jueves de 6:00 – 9:00 p.m.

Para más información, llame o mande un mensaje por correo electrónico a Carinna Tello 847-718-7722; o email carinna.tello@d214.org.

Ubicación: Wheeling High School | 900 S. Elmhurst Rd. Wheeling (¡No hay cuidado de niños!).

Clases: lunes y miércoles de 6:00 – 9:00 p.m.

Clases Virtuales: lunes y miércoles de 9:00 a.m. – 12 noon



Harper College

High School Equivalency (HSE) Certificate

(Formerly GED)

***HSE Preparation classes are available through
Harper College (847-925-6223) and
Township High School District 214 (847-718-7953).***

General Information

Persons who pass the High School Equivalency (HSE) tests receive official high school equivalency certifications. If you have not earned your high school diploma, you can earn an HSE certificate by passing an HSE test. The HSE certificate is recognized as equivalent to a high school diploma in civil service, business and industry, and by many colleges. Tests are given at several locations throughout the suburban area, including Harper College.

Eligibility

An individual is eligible to take the HSE test given they meet the following HSE guidelines: 17 years of age or older, is not a high school graduate or an HSE graduate, and has maintained residence in the State of Illinois for 30 days. If an individual is 16 years of age and has been enrolled in a public, private, or a home school setting in the last 12 months, they must present a withdrawal letter from the last school enrolled before taking the HSE test.

Course Information

The Adult Educational Development Department (AED) at Harper College offers Basic Skills, Pre-HSE, HSE, and HSE on-line classes. Classes are offered free of charge through support of federal and state grant funds. To enroll for classes, persons need to attend an HSE information session. Information about the next sessions can be found at <https://www.harpercollege.edu/academics/aed/index.php>.



Information sessions are offered at:

Harper Campus (Main Campus)
1200 W. Algonquin Road, Palatine
(847) 925-6223

Harper College Learning and Career Center
1375 S. Wolf Road, Prospect Heights
(847) 925-6001

AED classes are offered at four locations: Harper College Main Campus in Palatine; Harper Learning and Career Center in Prospect Heights; Education & Workforce Center in Hanover Park; and the Harper Partners for Our Community Center in Palatine. Classes meet for eight weeks in the morning or evening. Review of social studies, science, writing skills, literature, and mathematics are conducted, along with preparation for the U.S. and Illinois Constitution Test.

Free Adult Reading Classes

Township High School District 214 Community Education
Read to Learn Adult Literacy/Volunteer Program

Fall 2025 Schedule

Trained volunteer tutors implement prepared lesson plans for English-speaking adult learners in a one-to-one instructional setting.



STUDENTS: Go to ce.d214.org/readtolearn to pre-register for the site you wish to attend. You may register for one location only.

In addition, **all students are required to test.** You must go to one of the sites below on the date and time listed.

Class Dates	Class Locations	Class Times
Mon., Sept. 8 – Nov. 17	Schaumburg Township District Library, 130 S. Roselle Road, Schaumburg (Testing August 18)	9:30 a.m. – 12:00 noon
Mon., Sept. 8 – Nov. 10	Our Saviour's Lutheran Church, 1234 N. Arlington Heights Road, Arlington Heights (Testing August 18)	9:30 a.m. – 12:00 noon
Mon., Sept. 8 – Nov. 10	Arlington Heights Memorial Library, 500 N. Dunton Avenue, Arlington Heights (Testing August 18)	6:30 p.m. – 9:00 p.m.
Tues., Sept. 9 – Nov. 25	Arlington Heights Memorial Library, 500 N. Dunton Avenue, Arlington Heights (Testing August 19)	9:30 a.m. – 12:00 noon
Tues., Sept. 9 – Nov. 18	Prince of Peace Lutheran Church, 930 W. Higgins Road, Schaumburg (Testing August 19)	12:30 p.m. – 3:00 p.m.
Wed., Sept. 10 – Nov. 12	Indian Trails Public Library, 355 Schoenbeck Road, Wheeling (Testing August 20)	9:30 a.m. – 12:00 noon
Wed., Sept. 10 – Nov. 12	Schaumburg Township District Library, 130 S. Roselle Road, Schaumburg (Testing August 20)	9:30 a.m. – 12:00 noon
Wed., Sept. 10 – Nov. 12	*Christus Victor Lutheran Church 1045 S. Arlington Heights Road, Elk Grove Village (Testing August 20)	9:00 a.m. – 11:30 noon
Thurs., Sept. 11 – Nov. 20	Forest View Educational Center, 2121 S. Goebbert Road, Arlington Heights (Testing August 21)	9:30 a.m. – 12:00 noon
Thurs., Sept. 11 – Nov. 20	Rolling Meadows High School Library, 2901 W. Central Road, Rolling Meadows (Testing August 21)	7:00 p.m. – 9:30 p.m.
Fri., Aug. 29 – Nov. 14	Mount Prospect Public Library, 10 S Emerson Street, Mount Prospect (Testing August 22)	9:30 a.m. – 12:00 noon

*Replacement for site at Elk Grove Village Public Library.

Instructions

1. Pre-register for class at the website given below or use the QR code.
2. Go to class on the testing date listed at the class time
3. BE ON TIME!



For more information, go to www.ce.d214.org/readtolearn or call 847-718-7724

This project is made possible by a grant awarded by the Illinois State Library (ISL), a division of the Office of Secretary of State, using funds designated for literacy.

Schaumburg Township District Library

Schaumburg Township District Library serves the 130,000 residents of Schaumburg Township, including portions of Elk Grove Village, Hanover Park, Hoffman Estates, Roselle, Schaumburg and Streamwood. Each year, more than 1 million visitors come to the Schaumburg Library's three branches. In addition to more than 500,000 books, DVDs, CDs, eBooks and more items available for checkout, the Schaumburg Library has a 24-7 virtual branch at <http://www.schaumburglibrary.org> where you can view your account,



download digital services, conduct digital research and more. Dozens of programs are offered each month for all ages and interests, giving you educational, entertaining, hands-on experiences that allow you to connect with your family, friends, and neighbors.

Central Library, 130 S. Roselle Road; (847) 985-4000

Mon.-Thurs. 9:00 a.m. - 9:00 p.m.
Fri. 9:00 a.m. - 9:00 p.m.
Sat. 8:30 a.m. - 5:00 p.m.
Sun. Noon - 5:00 p.m.

Hoffman Estates Branch, 1550 Hassell Road; (847) 885-3511

Mon.-Thurs. 9:00 a.m. - 9:00 p.m.
Fri. 8:30 a.m. - 5:00 p.m.
Sat. & Sun. Closed

Hanover Park Branch, 1266 Irving Park Road; (630) 372-7800

Mon.-Thurs. 9:00 a.m. - 9:00 p.m.
Fri. 8:30 a.m. - 5:00 p.m.
Sat. & Sun. Closed

Palatine Public Library District

Palatine Library is your hub for learning, entertainment, and community. At the Main Library and its Branches, you can gain access to hundreds of thousands of books, audiobooks, eBooks, music, television shows and more. You can also use computers with Internet access and free Wi-Fi, and access various subscription-based online resources. The Workshop has a lab with brand new, state-of-the-art



equipment and a revitalized lab that is designed for you to explore, build, and create your own professional, school, and personal projects. Get a Library card to take advantage of everything the library has to offer. Visit <http://www.palatinelibrary.org> for more information.

Main Library, 700 N. North Court, Palatine; (847) 907-3600

Mon.-Thurs. 9:00 a.m. - 9:00 p.m.
Fri. 9:00 a.m. - 6:00 p.m.
Sat. 9:00 a.m. - 5:00 p.m.
Sun. Noon - 5:00 p.m.

North Hoffman Branch Library, Willow Recreation Center, 3600 Lexington Drive, Hoffman Estates; (847) 934-0220

Mon.-Thurs. 11:00 a.m. - 7:00 p.m.
Fri. 10:00 a.m. - 6:00 p.m.
Sat. 9:00 a.m. - 1:00 p.m.
Sun. Closed

Rand Road Branch Library, Community Resource Center, 1585 Rand Road, Palatine; (847) 202-1194

Mon.-Thurs. 10:00 a.m. - 6:00 p.m.
Fri. 9:00 a.m. - 4:00 p.m.

Sat. 9:00 a.m. - 1:00 p.m.
Sun. Closed



U.S. Citizenship Test Preparation

If you are a permanent resident, consider applying for American citizenship. We can help you to become an American citizen. Citizenship Test Preparation classes are free. Please bring your green card to registration.

Registration

Registration starts in August in Building C, enter through door #30. To sign-up for in-person registration and testing go to: <https://www.ce.d214.org/citizenship>.



August 12 and 14, 9:00 a.m.*

Forest View Educational Center
2121 S. Goebbert Road, Arlington Heights
Building C, Door #30
Classes meet Tues. & Thur. at 9:00 a.m. – 12:00 p.m.
**Childcare is available*

August 6, 11, 18 and 20, 6:00 p.m.*

Forest View Educational Center
2121 S. Goebbert Road, Arlington Heights
Building C, Door #30
Classes meet Mon. & Wed. at 6:00 – 9:00 p.m.
**Childcare is available*

August 12 and 14, 6:00 p.m.

Class conducted in English and Polish
Forest View Educational Center
2121 S. Goebbert Road, Arlington Heights
Building C, Door #30
Classes meet Tues. & Thurs. at 6:00 – 9:00 p.m.

August 12 and 14, 6:00 p.m.

Class conducted in English
Forest View Educational Center
2121 S. Goebbert Road, Arlington Heights
Building C, Door #30
Class meets Tues. & Thurs. at 6:00 – 9:00 p.m.

August 16, 9:00 a.m.

Class conducted in English only
Forest View Educational Center
2121 S. Goebbert Road, Arlington Heights
Building C, Door #30
Class meets Sat. at 9:00 a.m. – 2:00 p.m.

August 16, 9:00 a.m.

Class conducted in English and Polish
Forest View Educational Center
2121 S. Goebbert Road, Arlington Heights
Building C, Door #30
Class meets Sat. at 9:00 a.m. – 2:00 p.m.

August 16, 9:00 a.m.

Class conducted in English, Ukrainian and Russian
Forest View Educational Center
2121 S. Goebbert Road, Arlington Heights
Building C, Door #30
Class meets Sat. at 9:00 a.m. – 2:00 p.m.

August 16, 9:00 a.m.

Class conducted in English and Spanish
Forest View Educational Center
2121 S. Goebbert Road, Arlington Heights
Building C, Door #30
Class meets Sat. at 9:00 a.m. – 2:00 p.m.

September 11, 5:45 p.m.

Schaumburg Township District Library,
130 S. Roselle Road, Schaumburg
Classes meet Mon. & Thurs. at 5:45 – 8:45 p.m.

September 4, 6:00 p.m.

Wheeling High School
900 S. Elmhurst Road, Wheeling
Door #25, Room #188
Class meets Tues. & Thurs. at 6:00 – 9:00 p.m.

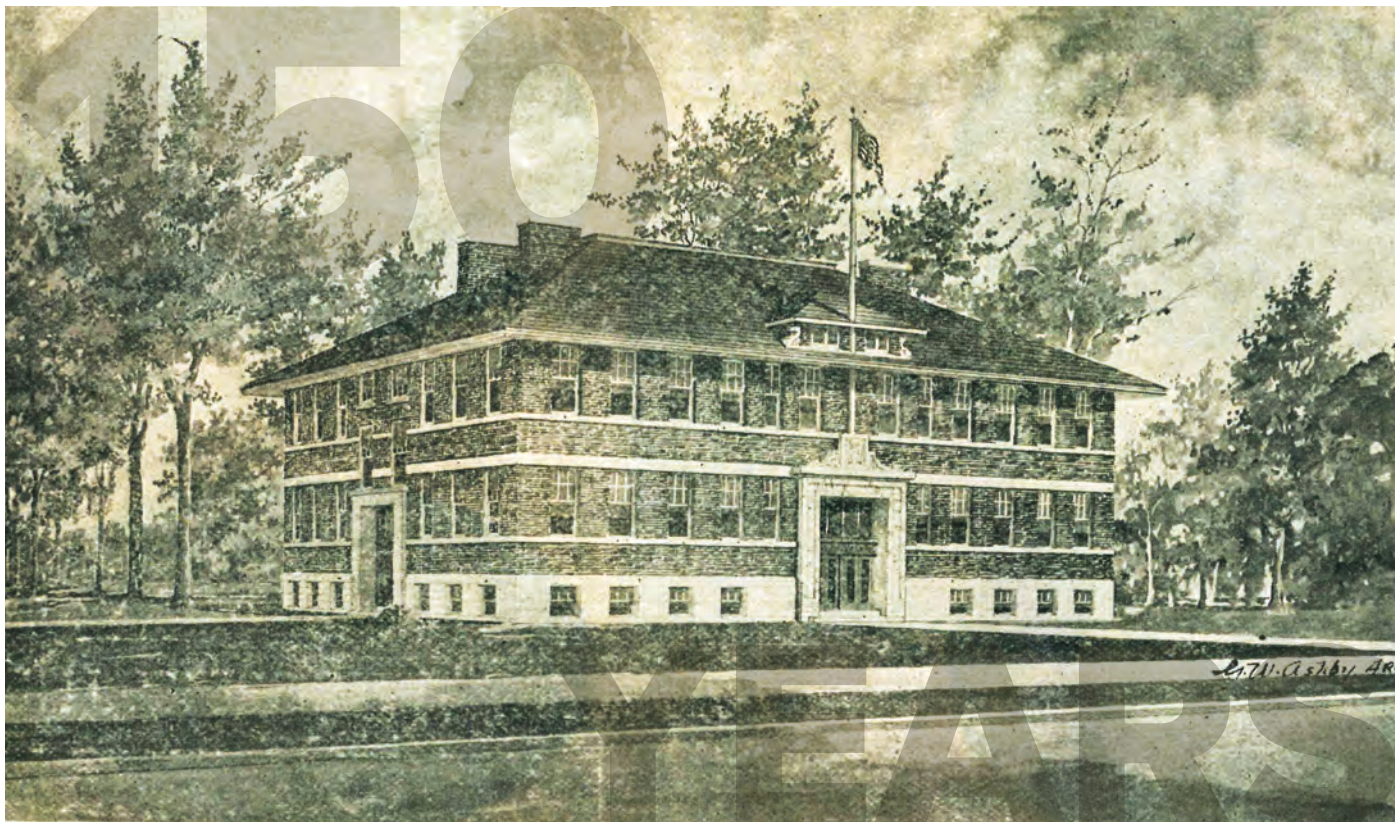
July 29 and 31, 6:00 p.m. Online Citizenship Class Registration and Testing

Forest View Educational Center • 2121 S. Goebbert Road, Arlington Heights • Building C, Door #30
Class meet online Tues. & Thurs. at 6:00 – 9:00 p.m.

For more info contact: Ewa Crowe at 847-718-7730 or ewa.crowe@d214.org
Monica Molina at 847-718-7911 or monica.molina@d214.org



DISTRICT 211 MARKS SESQUICENTENNIAL



Palatine High School 1913

The 2025-2026 school year will bring a significant milestone for both Palatine High School and District 211: Both will mark their sesquicentennial.

First opening its doors in 1875, the Palatine School – the first in what is now District 211 -- is described as having three classrooms and was run by Charles S. Cutting. A December 1876 article notes a student population of 250 students across all grade levels.

In 1914, high school students were separated from other grades when the Palatine Township High School District was formally created. At that time, PTHS held classes in space rented from the elementary district. By 1927, with an expected increase in the area's student population, the decision was made to build a new school.

The new Palatine High School opened in September 1928 with an estimated student population of 350. It remained Palatine's only high school until another student population increase prompted the need for a second building.

In September 1961, the District opened its new building on Quentin Road in Palatine. This school initially served as a two-year campus for the District's freshman and sophomore students. The same year, the District decided to add opportunities for adults in the community. On September 26, 1961, District 211 held its first night of the Adult Night School program. This program evolved to become the District's

(Continued on page 32.)

Continuing Education program, which continues to offer a variety of skill training and educational services for adults throughout the area.

The 1960s saw rapid growth throughout District 211. In 1964, the Palatine freshman-sophomore campus became a full four-year campus and received the official name of William Fremd High School in honor of Board of Education member William Fremd, who had joined the District 211 board in 1938. Fremd would ultimately serve on the board until shortly before his death in 1972.

One year later, the District opened its first school in Hoffman Estates, and its third overall school. This new building was named James B. Conant, after the lifelong educator and former president of Harvard.

The decade ended with the construction of the District's fourth school. Though the plan was for Schaumburg High School to open its doors for the 1969-1970 school year, construction delays saw the building open officially in September 1970. At the same time Schaumburg was opening its doors, District officials were already working on plans for its fifth school. On October 21, 1973, Hoffman Estates High School held an open house and dedication ceremony, officially opening the school for the 1973-1974 school year.

Though the south side of the District now had three schools, growing enrollment numbers meant the current north side schools were quickly running out of room. As the centennial of the District's history approached, construction began on the new Palatine High School. While every school built by the District over the previous decade had served as an additional school, this new building served as the formal and official replacement for the Wood Street school. In 1977, the new Palatine High School opened.

In more recent years, the District added programs to students who may need additional services and directions. Among these are the District 211 North Campus, the Higgins Education

Center, and Adult Transition Program. With these, the District continued to ensure every student is prepared for life after high school, no matter what path they chose.

For 150 years, District 211 has built a legacy of success and innovation. It is now home to more than 12,000 students and a host of course options, support systems, activities and athletics that collectively prepare graduates for college, careers and life.

It has hosted a number of educators and industry experts interested in the career program and the school's successful goal of preparing first-generation college students. Illinois State Superintendent Tony Sanders recently noted the "willingness of the faculty and administration to develop unique courses of study for the students that engage them and connect them with their teachers in a way that other schools might not."

Throughout the upcoming school year, District 211 will celebrate the century-and-a-half of history that has created a community of academic excellence.



▼
1875

Palatine School
opened

**The New Palatine High
School opened**

1928
▲

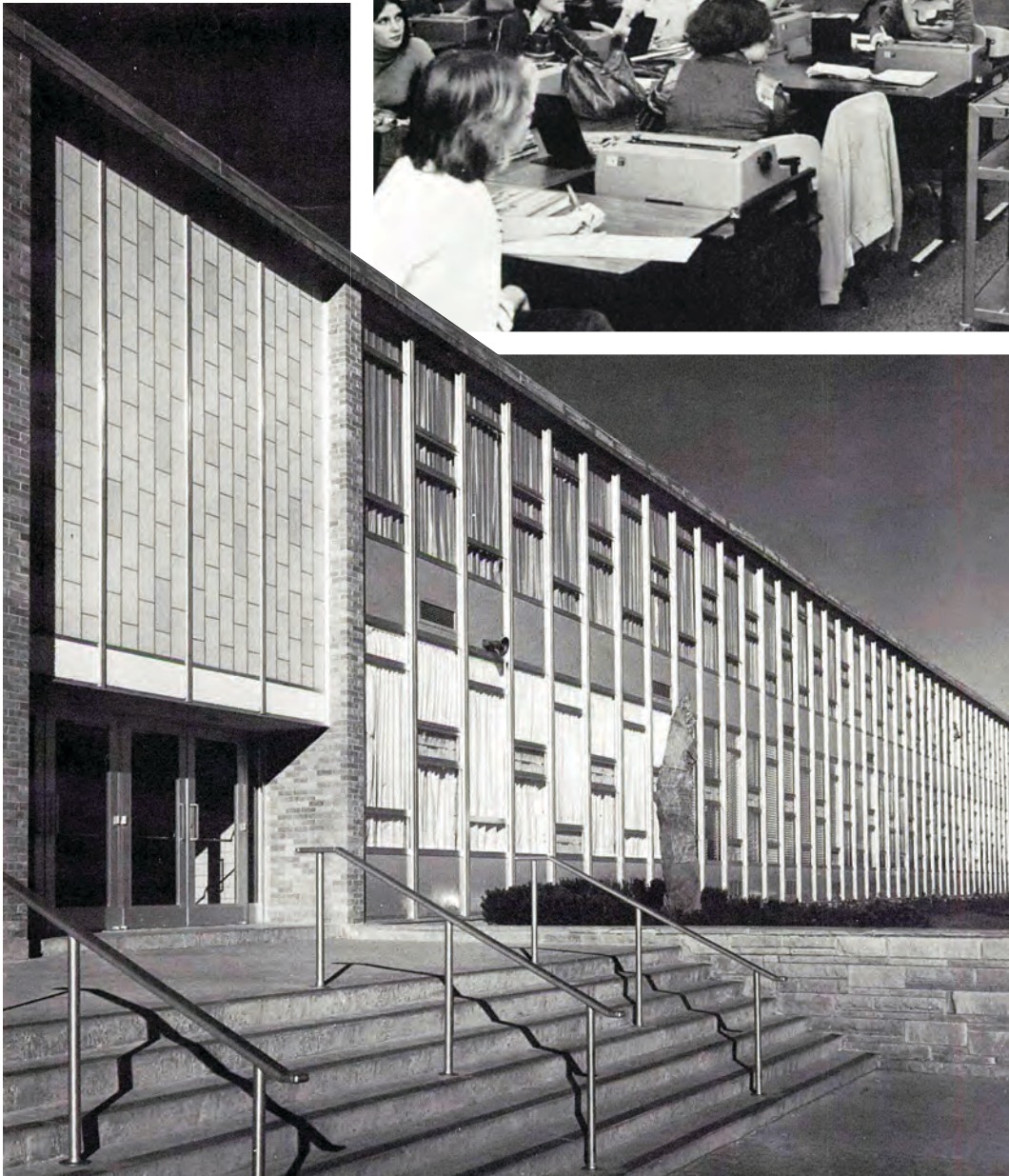
▼
1961

**New High School on Quentin
Road opened its doors to
Freshmen & Sophmores**

**Community education
classes introduced.**



▲ Hoffman Estates High School 1977 Business class



◀ William Fremd High School in honor of Board of Education member William Fremd, who had joined the District 211 board in 1938. Fremd would ultimately serve on the board until shortly before his death in 1972.

◀ Opposite page; 32. Though the plan was for Schaumburg High School to open its doors for the 1969-1970 school year, construction delays saw the building open officially in September 1970.

William Fremd High School
officially named
as a 4-year high school

1964

1965

James B. Conant
opened

Schaumburg High
School opened

1970

1973

Hoffman Estates
High School opened

Celebrating 150
Years!

2025



TOWNSHIP HIGH SCHOOL DISTRICT 211

Non-Profit Organization U.S. Postage PAID Schaumburg, IL Permit No. 125
--

Continuing Education

1750 South Roselle Road

Palatine, Illinois 60067-7336

Telephone: (847) 755-6820

adc.d211.org

UNITED STATES DEPARTMENT OF EDUCATION
BLUE RIBBON SCHOOLS OF EXCELLENCE

Palatine

High School

1111 North Rohlwing Road
Palatine, IL 60074-3777
(847) 755-1600
phs.d211.org

Schaumburg

High School

1100 West Schaumburg Road
Schaumburg, IL 60194-4150
(847) 755-4600
shs.d211.org

William Fremd

High School

1000 South Quentin Road
Palatine, IL 60067-7018
(847) 755-2600
fhs.d211.org

Hoffman Estates

High School

1100 West Higgins Road
Hoffman Estates, IL 60169-4050
(847) 755-5600
hehs.d211.org

James B. Conant

High School

700 East Cougar Trail
Hoffman Estates, IL 60169-3659
(847) 755-3600
chs.d211.org

G.A. McElroy

Administration Center

1750 South Roselle Road
Palatine, IL 60067-7336
(847) 755-6600
adc.d211.org